

透科自动化

Ethernet/IP JP KV8000



2023-3-22

2023 03 22

2023 03 22









DHCP **扫描** **下载** **监控** **参数** **描述文** **帮助**
服务 **模块** **参数** **件导入**

IP地址范围: 192 . 168 . 0 . 1 — 192 . 168 . 0 . 255

0%

开始 停止



IP

IP

LA_Config

JP0808X_EP(192.168.0.2)

模块参数

模块类型: JP0808X_EP
 物理地址: 7C-BA-CC-15-82-3E
 IP 地址: 192.168.0.2
 子网掩码: 255.255.255.0
 默认网关: 192.168.0.1
 扩展数量: 0
 固件版本: V0.01 Mar 1 202314:23:59
 背板版本: NONE
 I_SIZE(byte) O_Size(byte) C_Size(byte)
 1 1 3

扩展模块信息

模块类型:
 固件版本:
 描述:
 恢复参数默认值

0: JP0808X_EP (JP-一体式 8DI 8DO Ethernet/ip)

General

IP地址分配方式: 静态IP
 滤波时间: 5
 DO_错误模式: 0
 DO_错误安全值: 0

Page 2/11 0.0.0.0 2023.03.01 14:59:07

1

“IP” “IP”



DHCPService

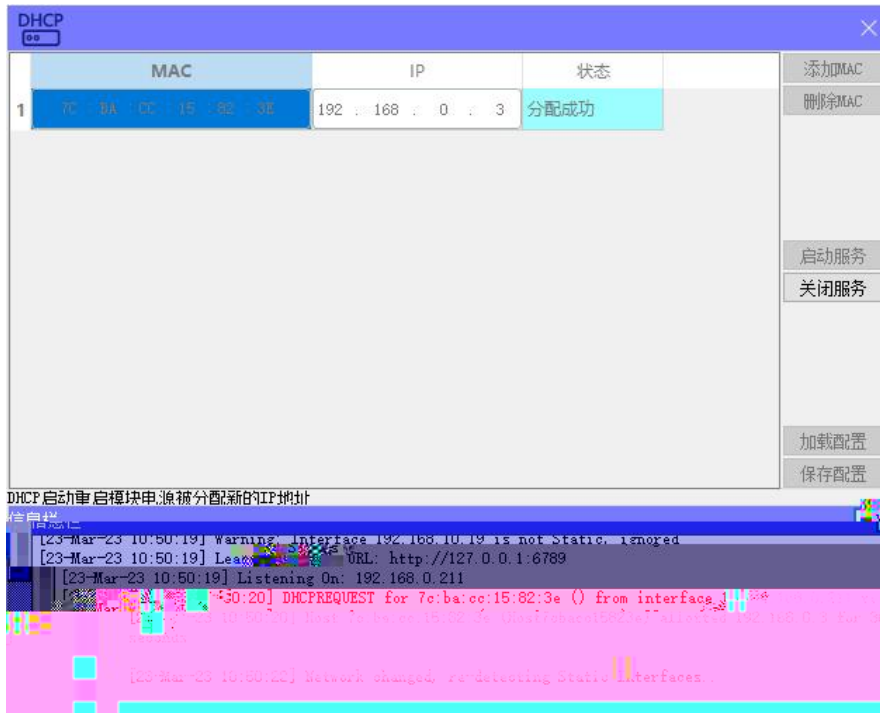
“ MAC” “ MAC”

MAC

IP

“ ”

IP



“ ”



mac	IP地址	子网掩码	默认网关	模块名称	状态
-----	------	------	------	------	----

扫描时间 5 :S

全局扫描 修改IP 恢复出厂设置 重启模块

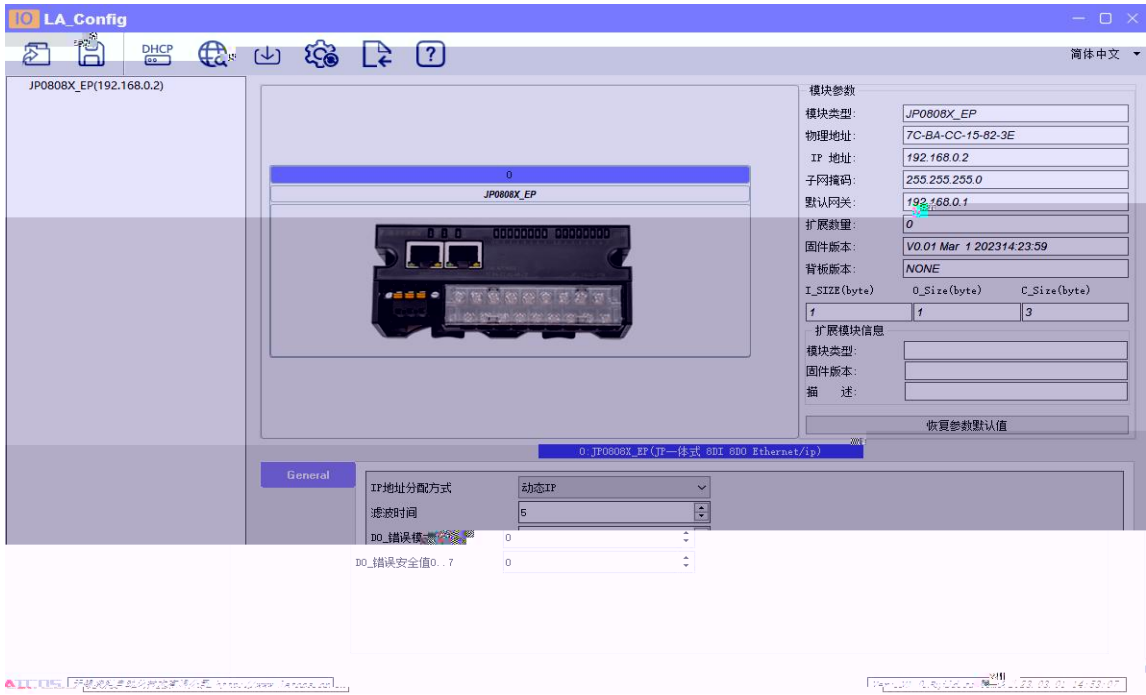
mac	IP地址	子网掩码	默认网关	模块名称	状态
1 7C-BA-CC-15-82-3E	192 . 168 . 0 . 3	255 . 255 . 255 . 0	192 . 168 . 0 . 1	JP0808X_EP	未操作

扫描时间 5 :S

全局扫描 修改IP 恢复出厂设置 重启模块

扫描进行中: 100%

IP " IP" IP



/

1

2) DO_ 0..7 DQ0.x bit DQ0.x

Bit0 DQ-0.0 "Error Mode" bit "1"

"Error Value[7..0]" bit DQ0.x

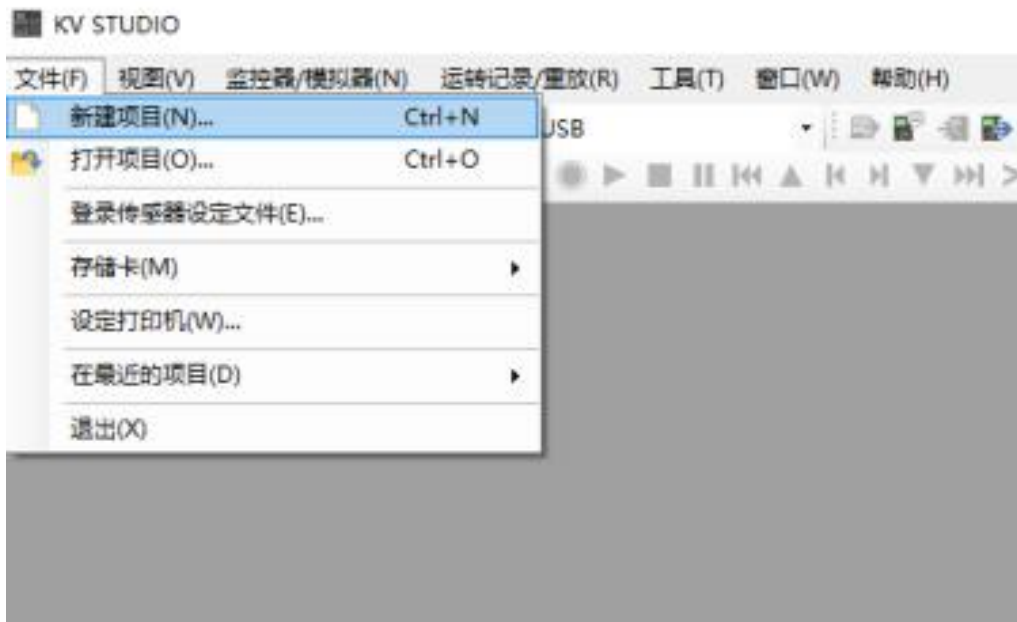
3) DO_ 0..7 "Error Mode[7..0]" bit

DQ

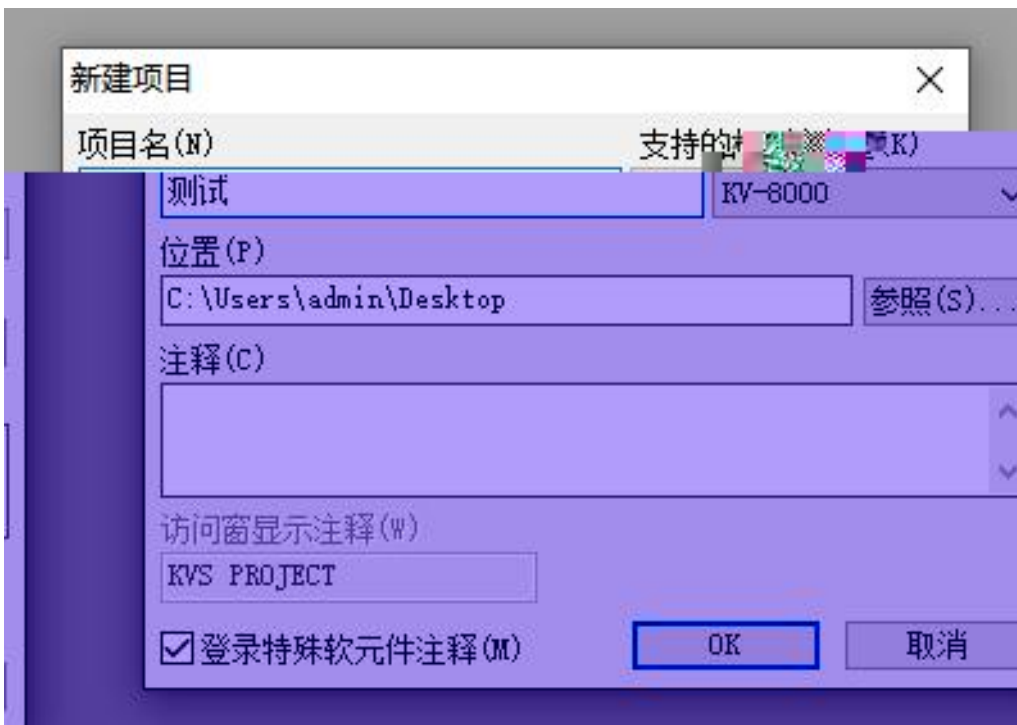
4) "  "

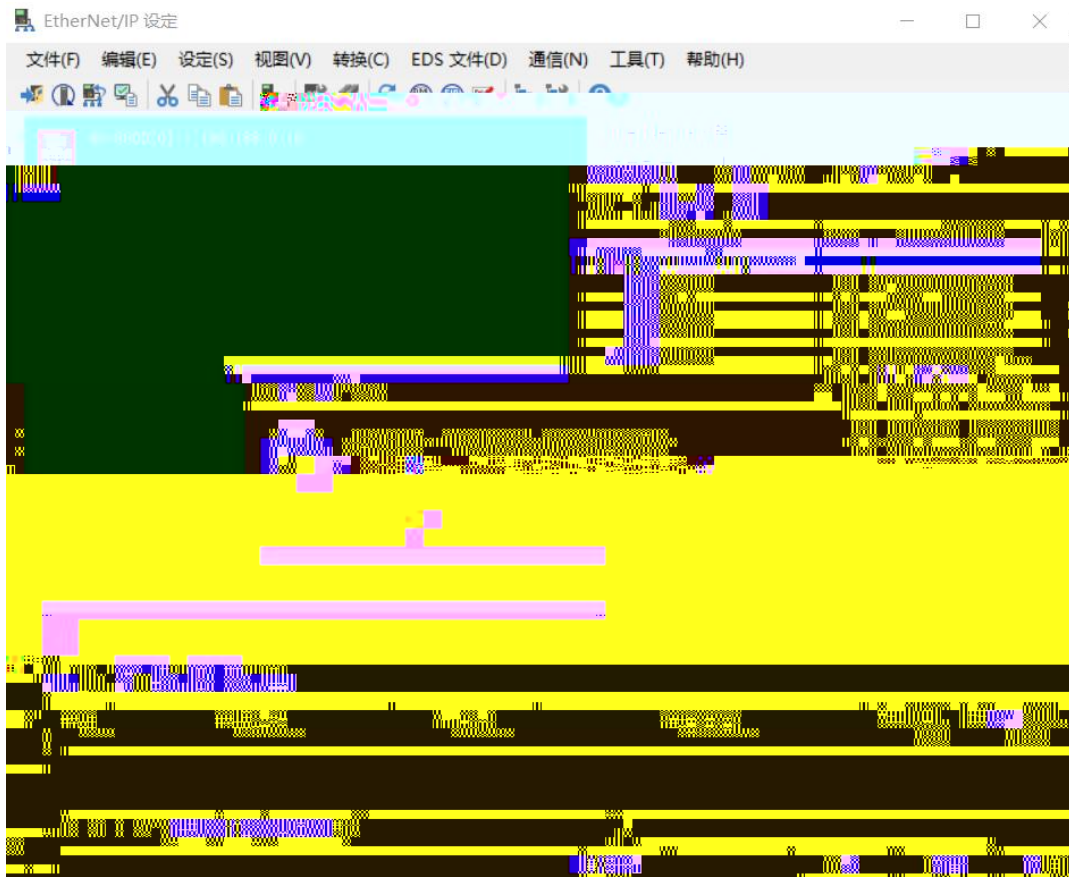
KV STUDIO

" " " "



PLC

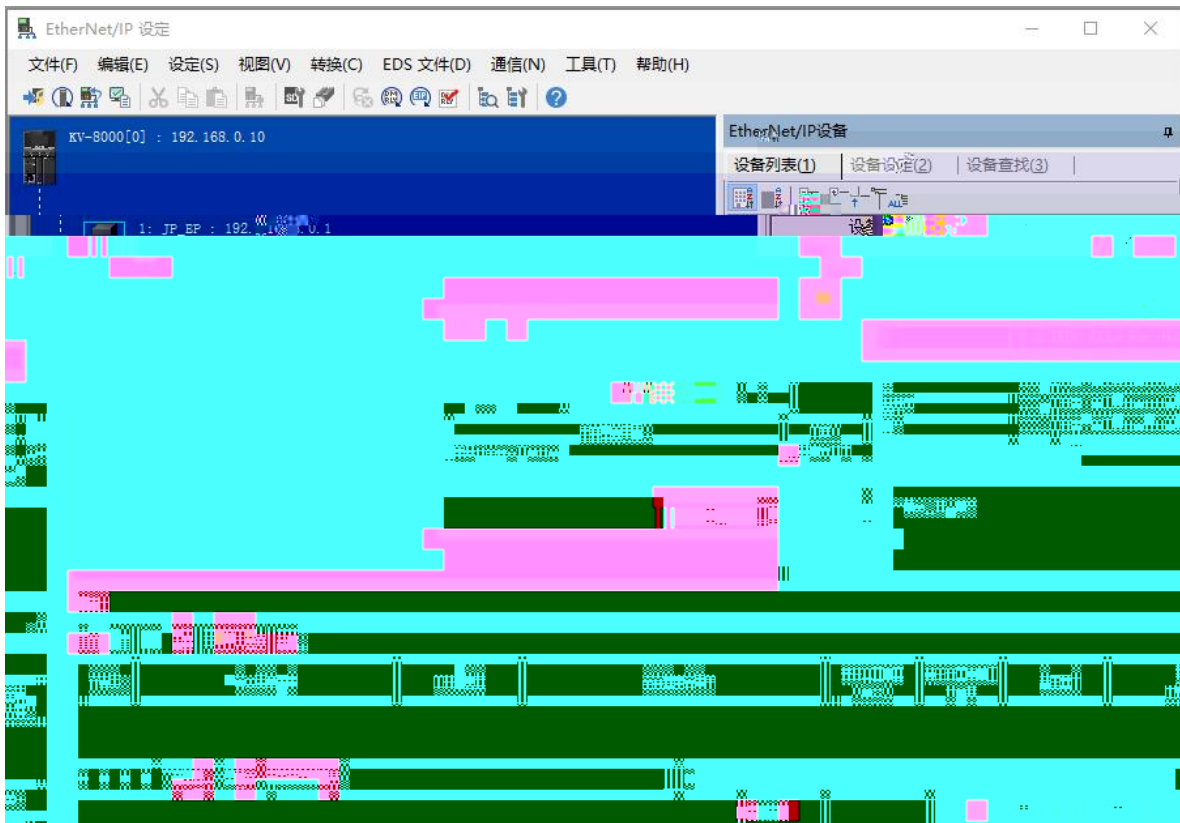




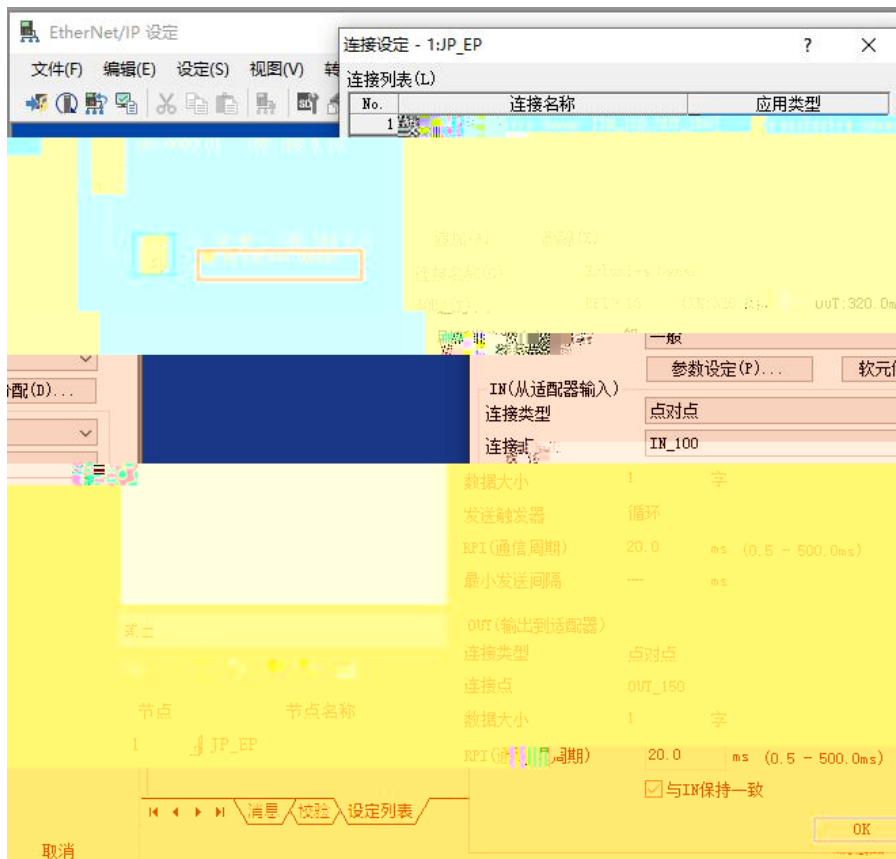
“EtherNet/IP ” “EDS ” “ ” “ ”



IP

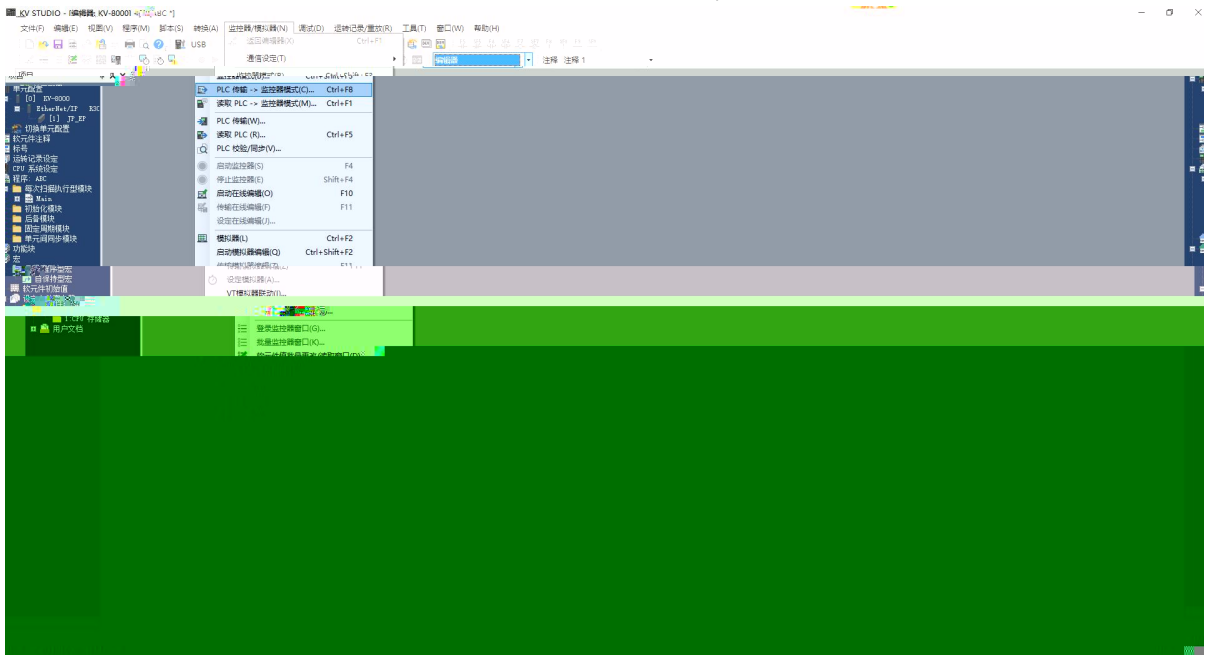


“Exclusive Owner”



PLC

plc



PLC

" " " "



1.

windows

ping

IP

ping

ping

IP

IP

2

RUN

ERR

IP

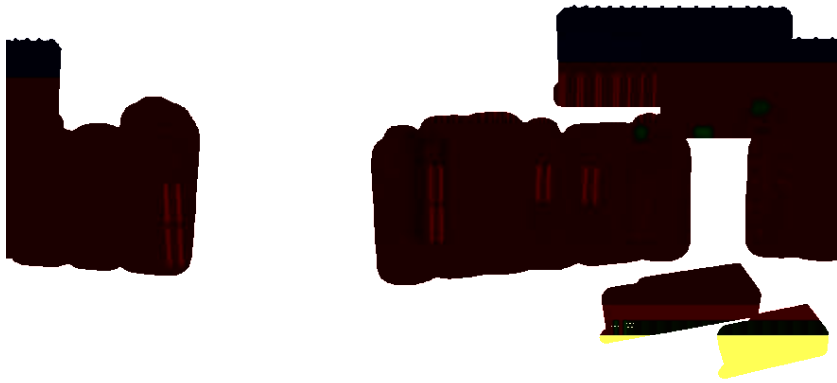
IP

IP



原科自研
LATCOS

010-61511111 | www.latcos.cn



www.latcos.cn