

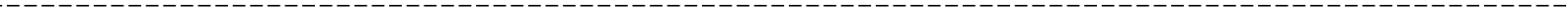


MR

KV 7500

ethernetip)





1.

2.

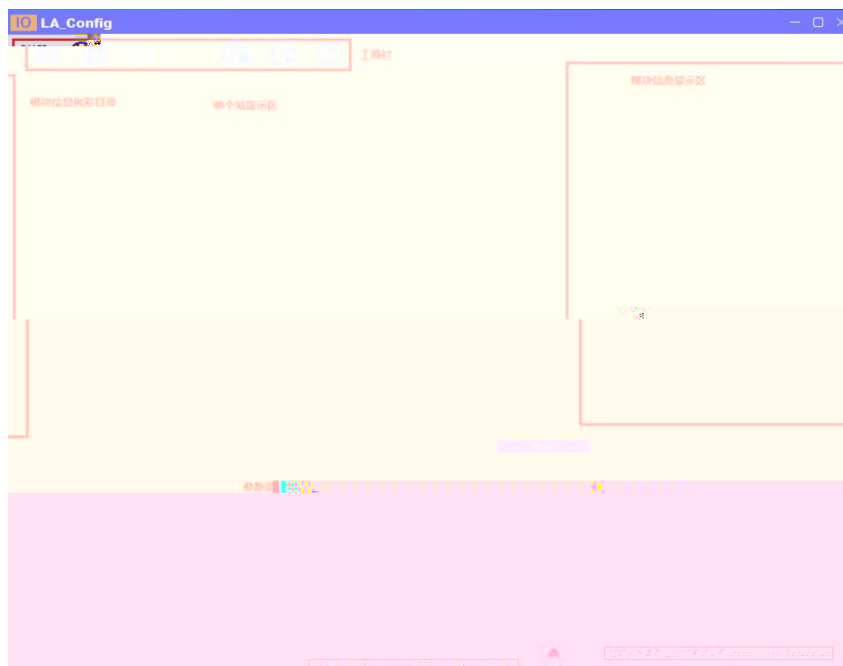
3.

4.

4.1

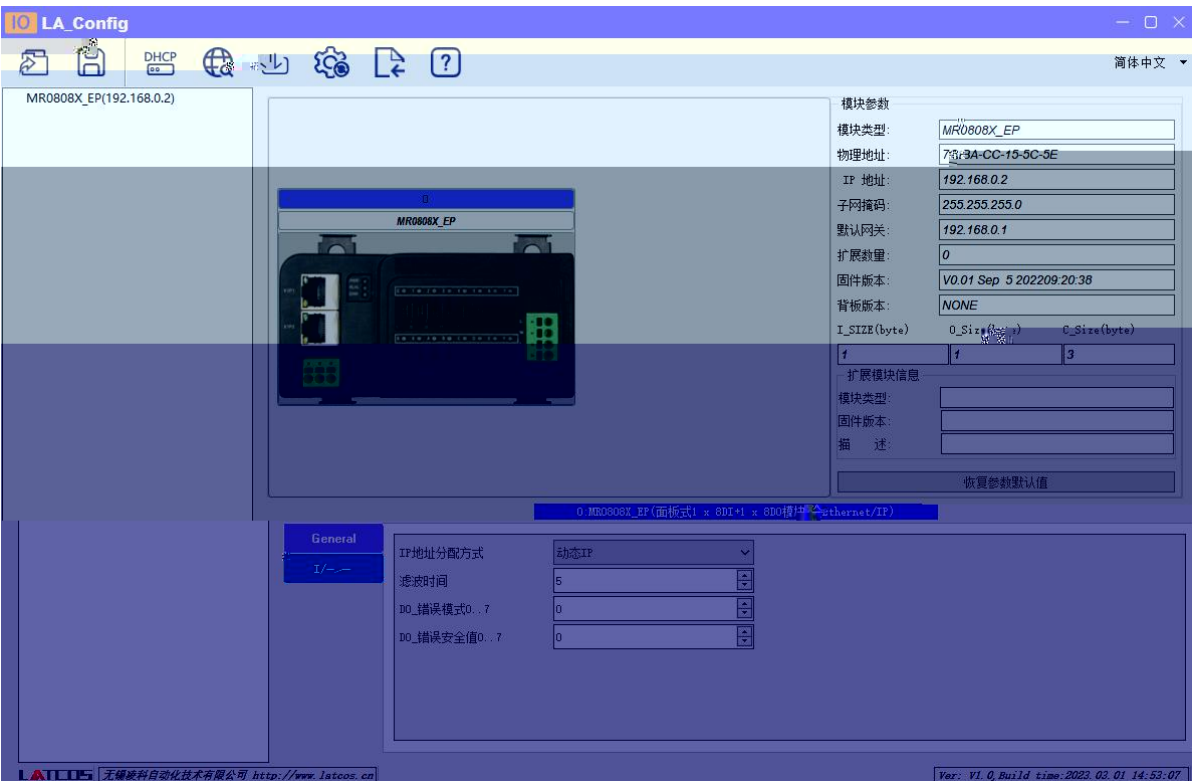
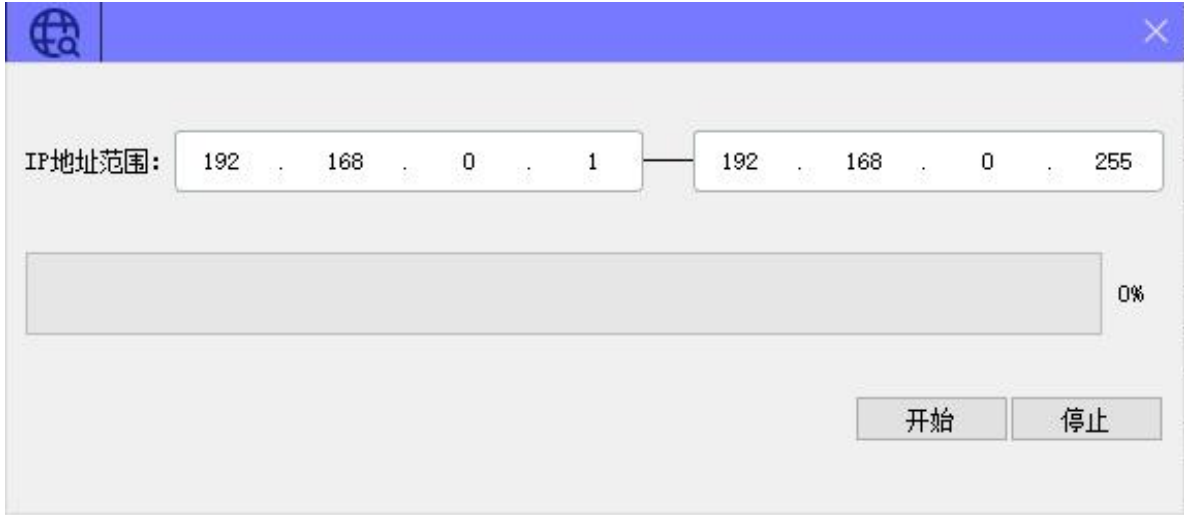
4.2 IP

4.2.1





4.2.2



The screenshot shows a DHCP management window with a table containing one entry. The table has columns for MAC, IP, and status. The entry has MAC 7C:BA:CC:11:00:56, IP 192.168.0.4, and status '未分配'. To the right of the table are buttons for '添加MAC', '删除MAC', '启动服务', '关闭服务', '加载配置', and '保存配置'. Below the table is a status bar with the text 'DHCP 启动单启模块申请被分配新的IP地址' and an '信息栏' label.

	MAC	IP	状态
1	7C : BA : CC : 11 : 00 : 56	192 . 168 . 0 . 4	未分配



The screenshot shows the DHCP management window after a successful assignment. The table entry now has MAC 7C:BA:CC:11:00:5B, IP 192.168.0.3, and status '分配成功'. The status bar text is the same. Below the status bar is a log window showing the following messages:
[04-Feb-21 13:58:14] Listening On: 192.168.0.153
[04-Feb-21 13:58:17] DHCPDISCOVER for 7c:ba:cc:11:00:5b () from interf



Settings window showing a table with columns: mac, IP地址, 子网掩码, 默认网关, 模块名称, 状态.

mac	IP地址	子网掩码	默认网关	模块名称	状态
-----	------	------	------	------	----

扫描时间 5 :S 全局扫描 修改IP 恢复出厂设置 重启模块

Settings window showing a table with columns: mac, IP地址, 子网掩码, 默认网关, 模块名称, 状态. The table contains one row of data.

mac	IP地址	子网掩码	默认网关	模块名称	状态
7C-B1-31	192.168.0.3	255.255.255.0	192.168.0.1	7C-B1-31	配置成功

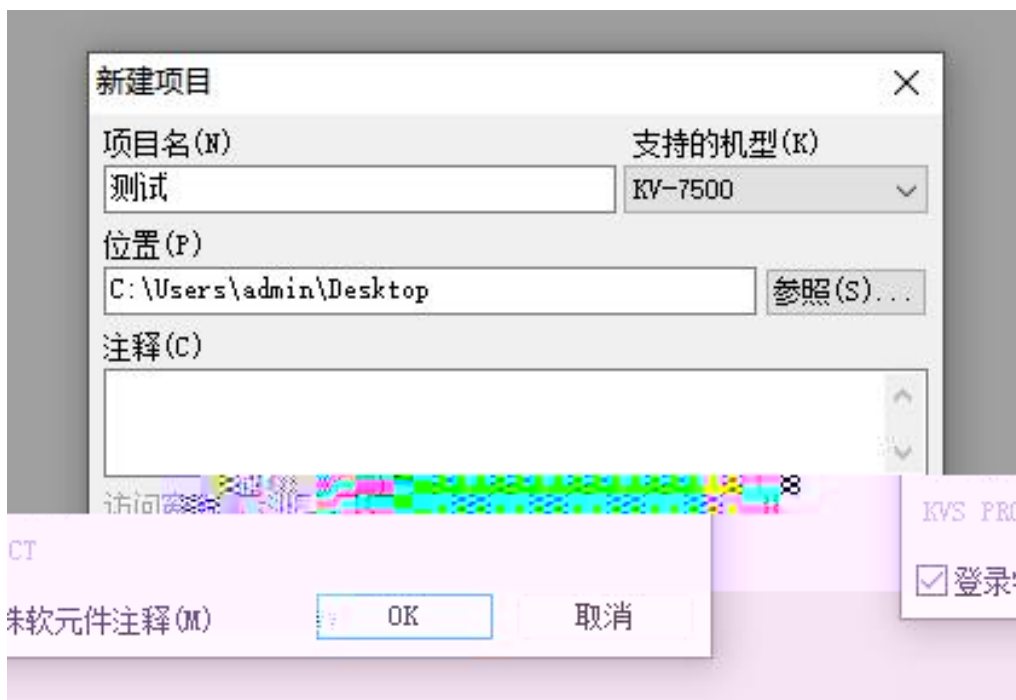
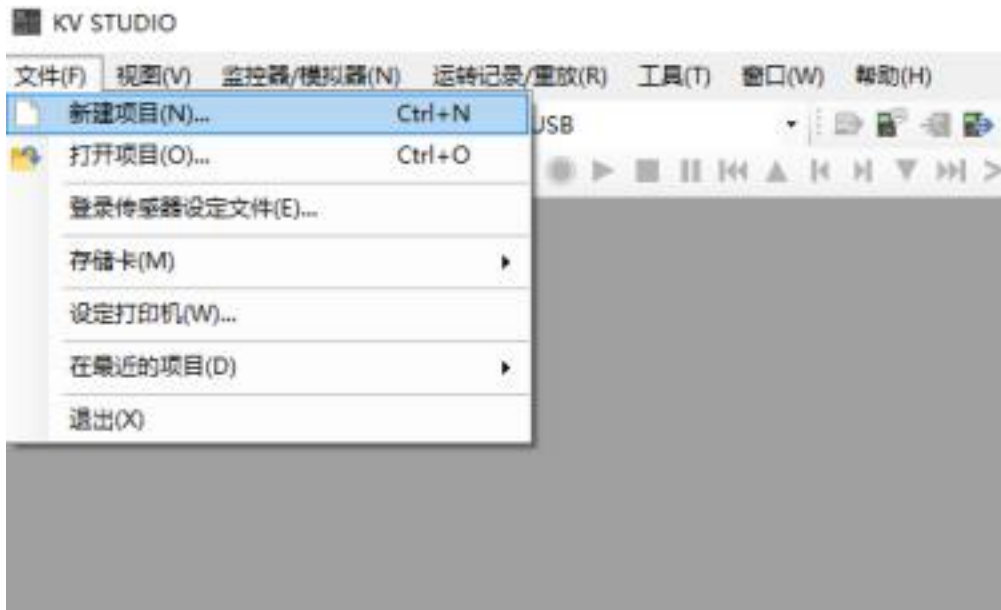
扫描时间 5 :S 全局扫描 修改IP 恢复出厂设置 重启模块

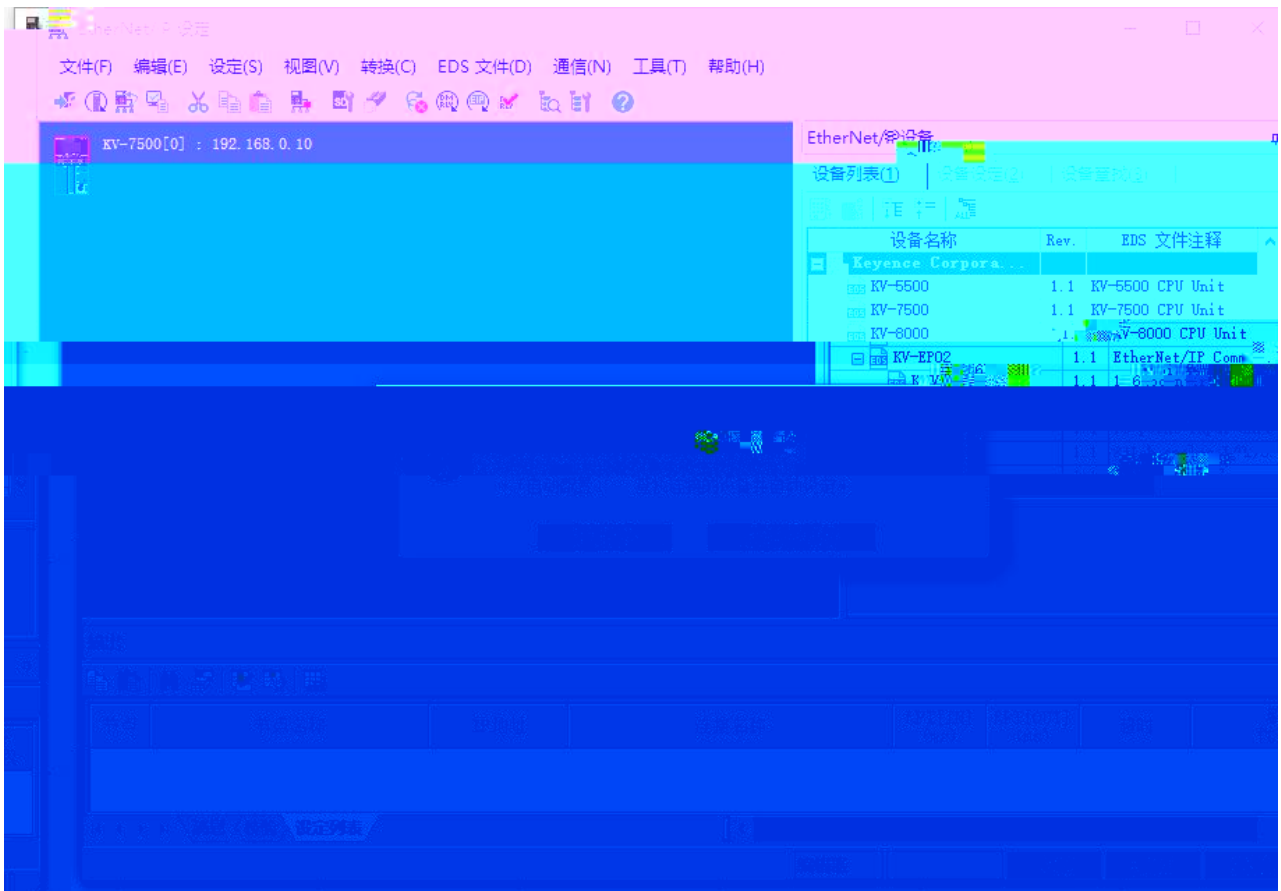
正在进行  100%

5.

5.1

5.2

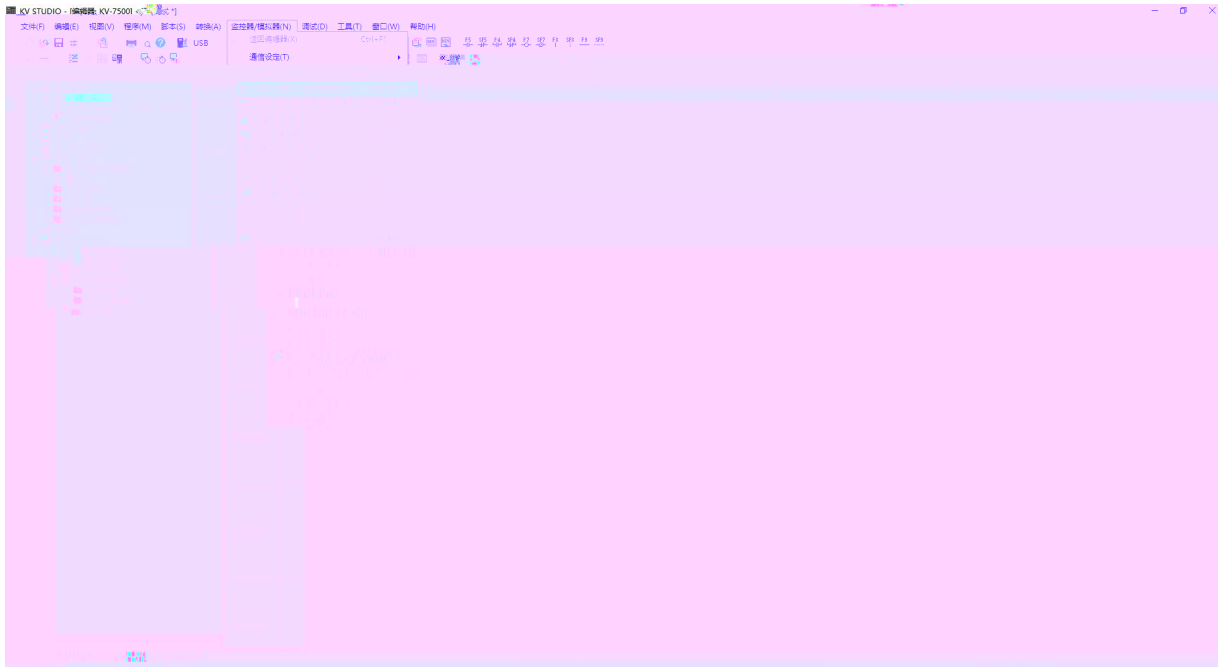




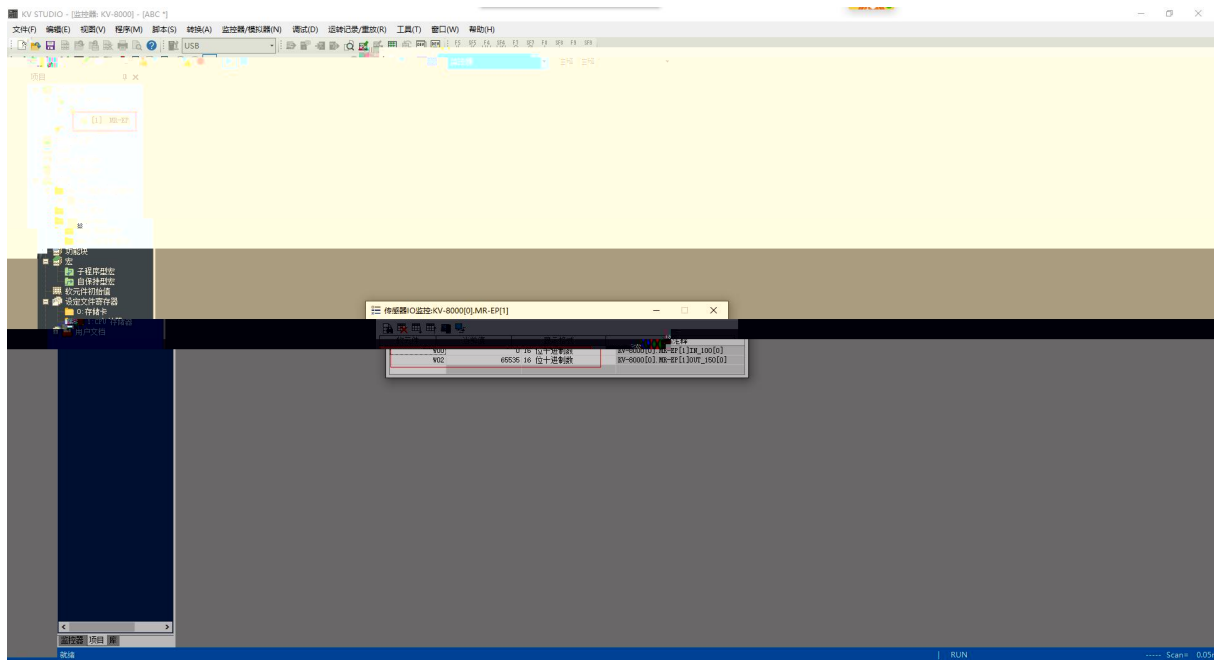
5.4 EDS



I_SIZE (byte)	O_Size (byte)	C_Size (byte)



5.6



6.

