

凌科自动化

# User Manual



ETHERNET/IP  
MODBUS RTU  
APG 1503

RS485











1

ETHERNET/IP

2

10/100 Mbaud

3

RJ45

IEEE 802.xx

4

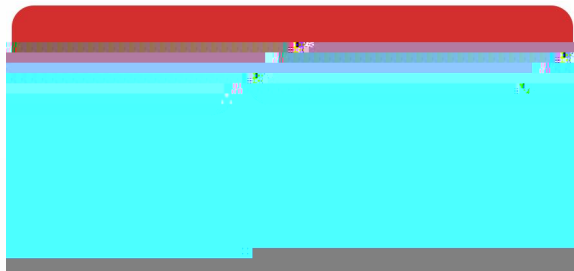
MAC

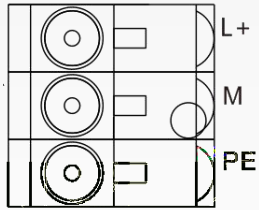
5

CAT5e

6

( m~





1	L	24V
2	M	
3	PE	

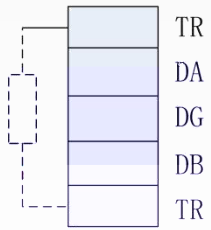
X1P2, RJ45 X1P1  
 MAC mac  
 LED 3 Modbus ETHERNET/IP  
 3

PWR		
ALM		Modbus
RX		Modbus
TX		Modbus
RY		operate
MT		LED
SF		---
ER		ETHERNET/IP

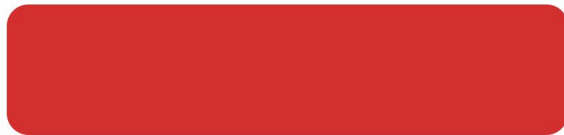


Mobus 120R TR  
 TR1 DA, TR2 DB

4



1	TR1	
2	DA	/ A
3	DG	
4	DB	/ B
5	TR2	



status

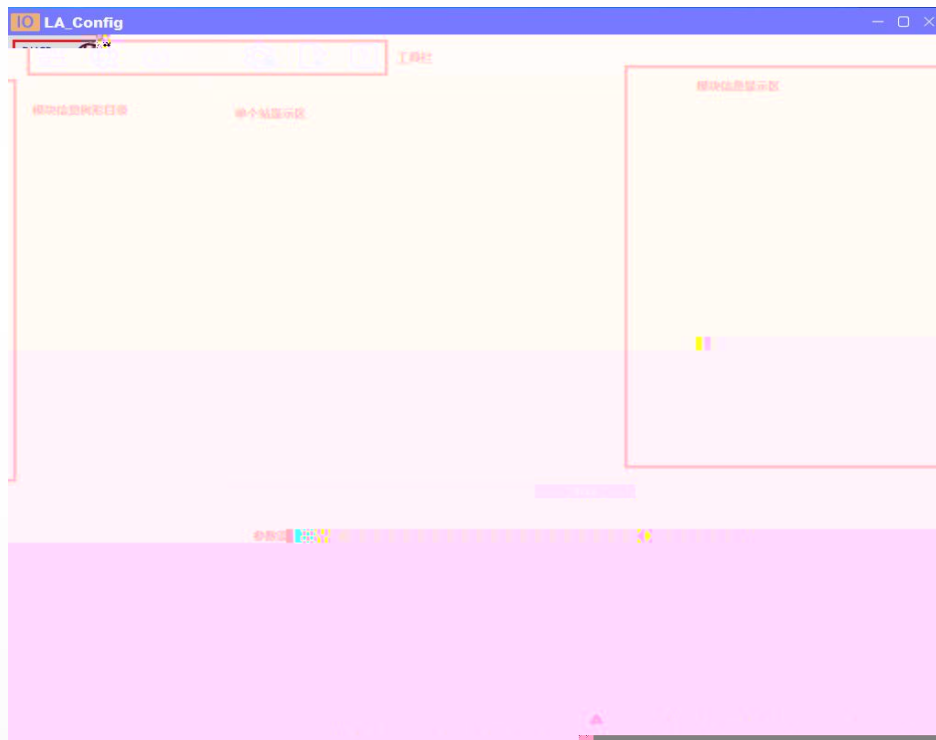

control

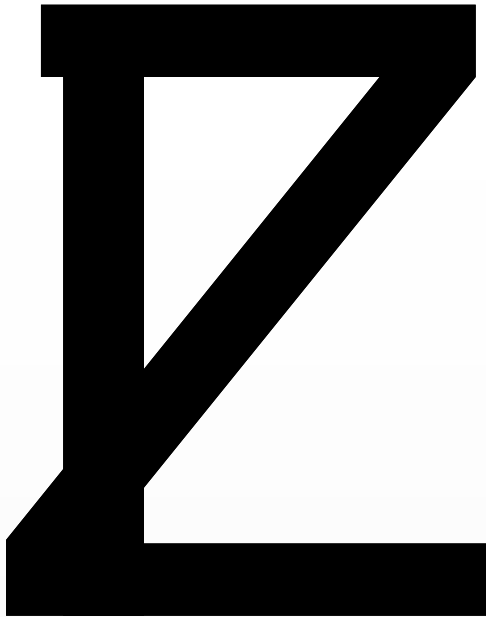
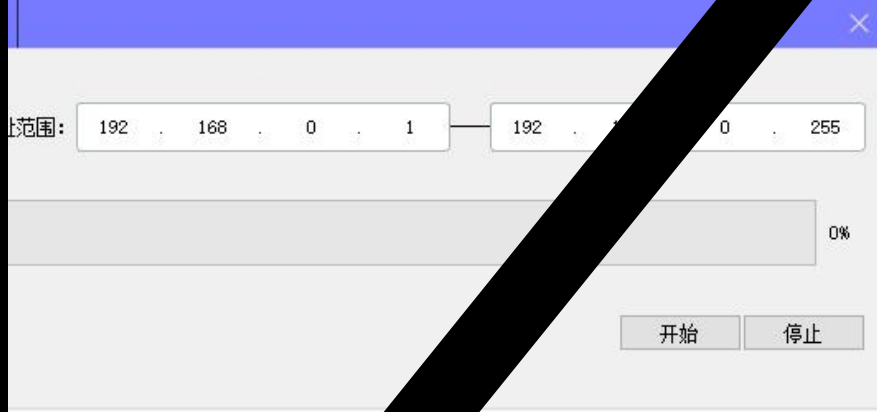
			/



“LAEConfig” LAEConfig

WIN10







DHCPService

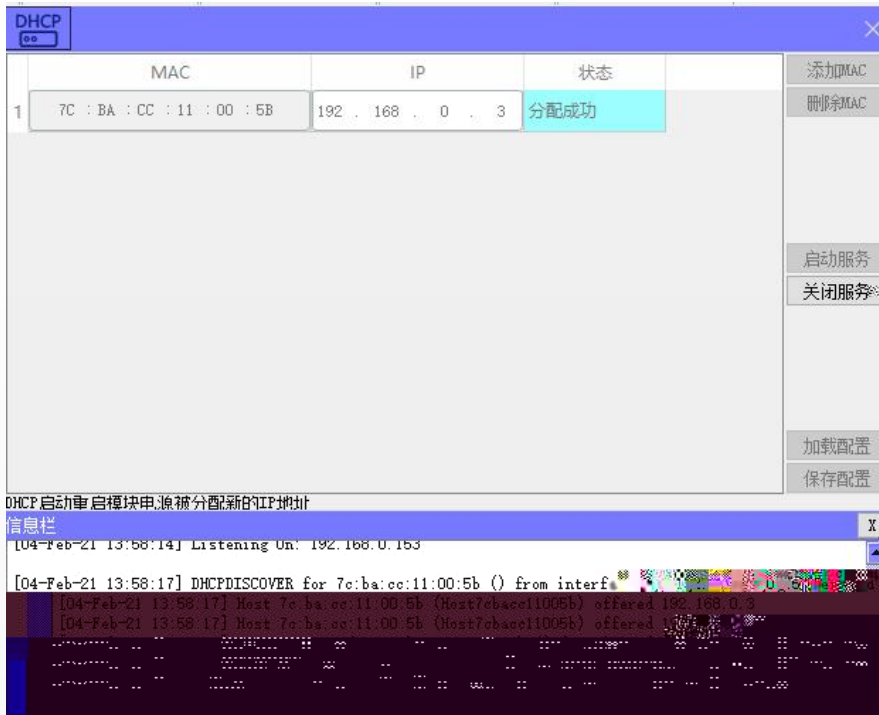
MAC

MAC

MAC

IP

IP



" "



IP

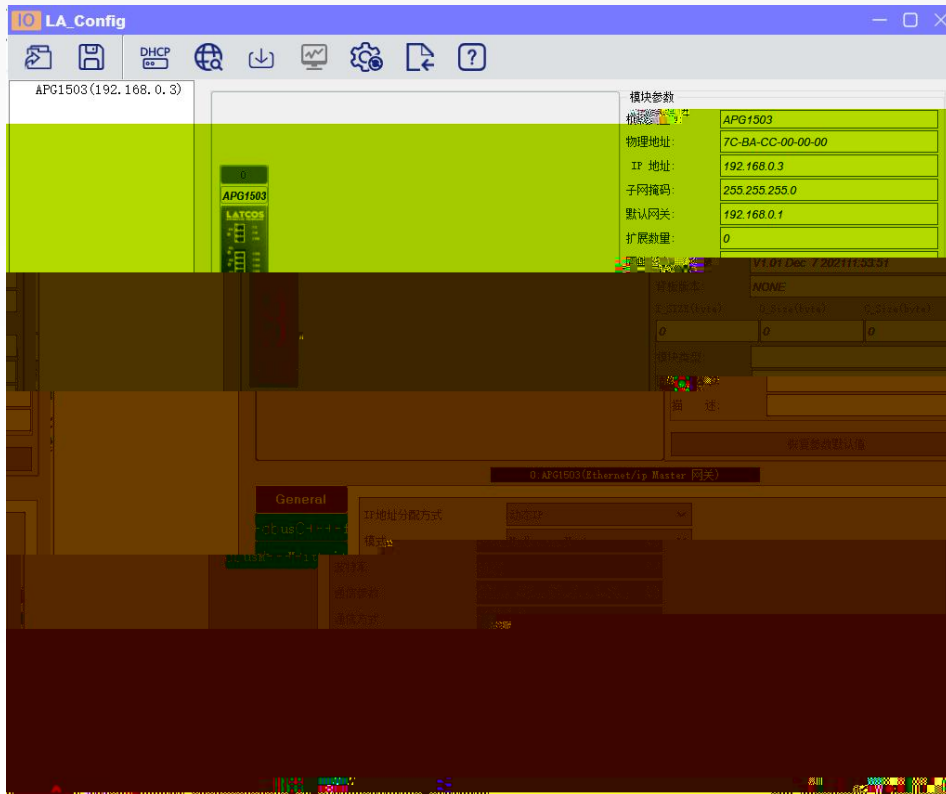
" IP"

IP

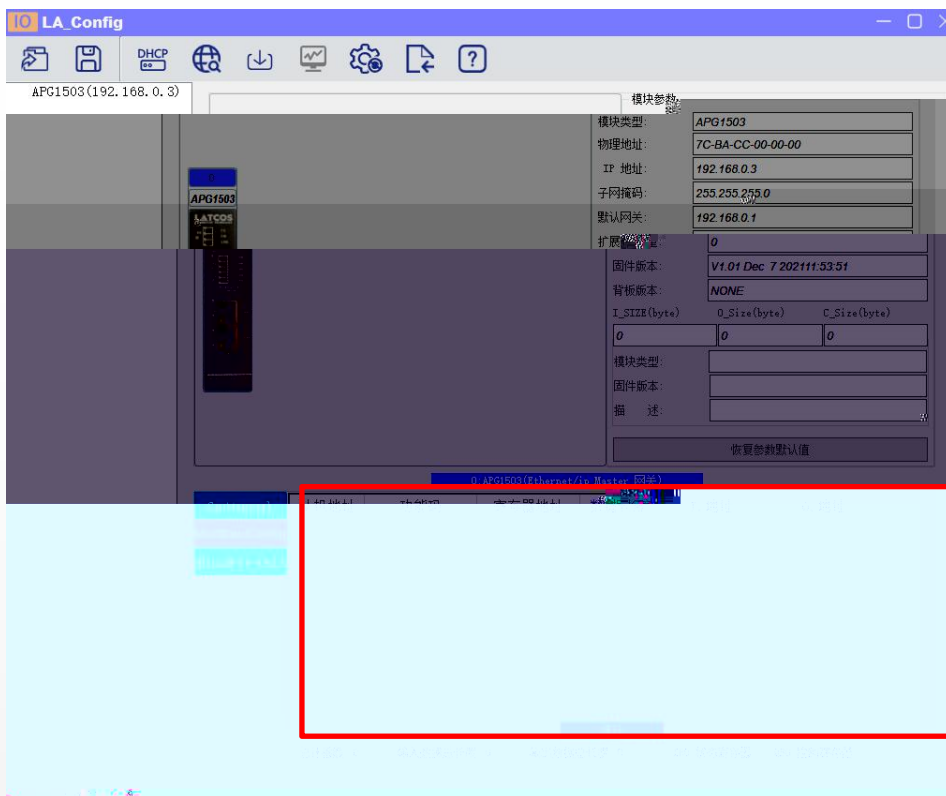


1 modbus master

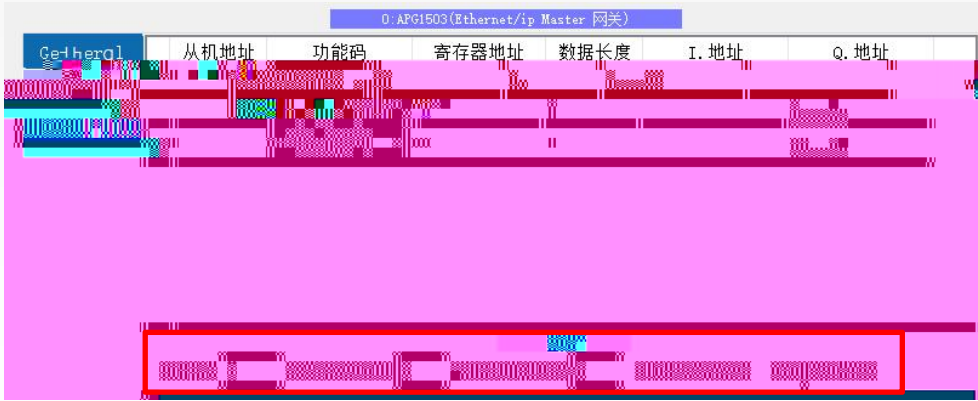
modbus



2. modbus config

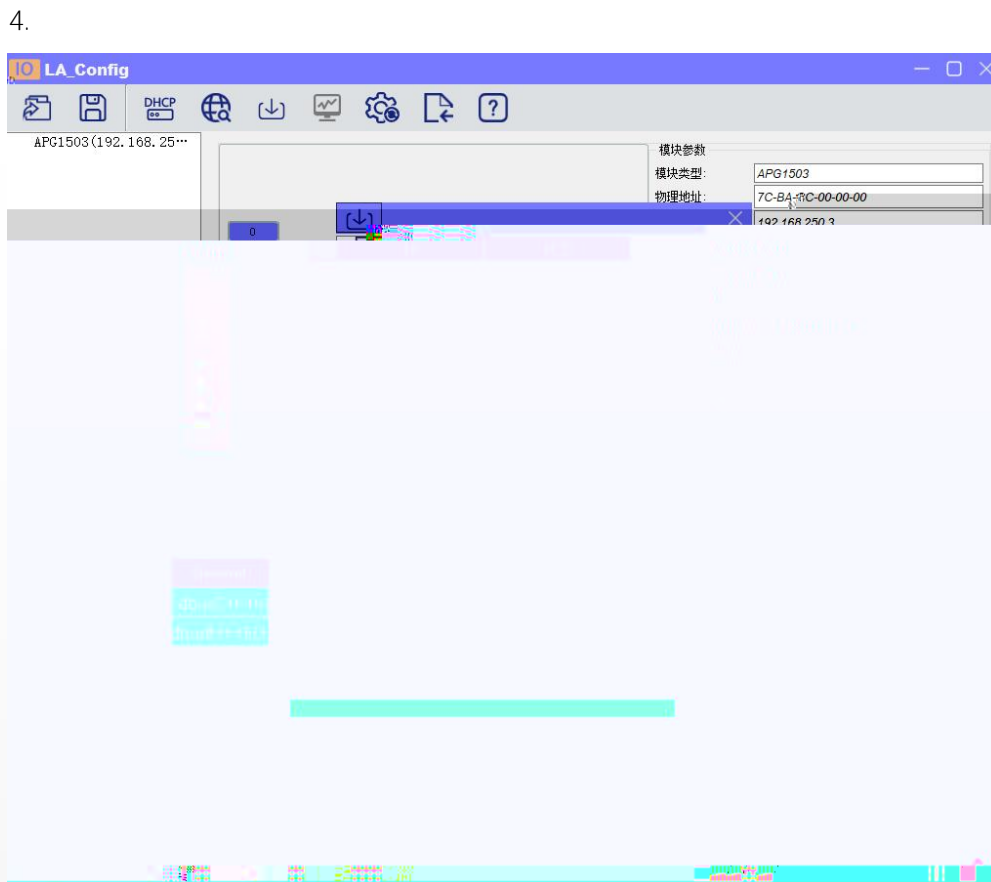


3. 增加  
删除 " " modbus  
" " modbus



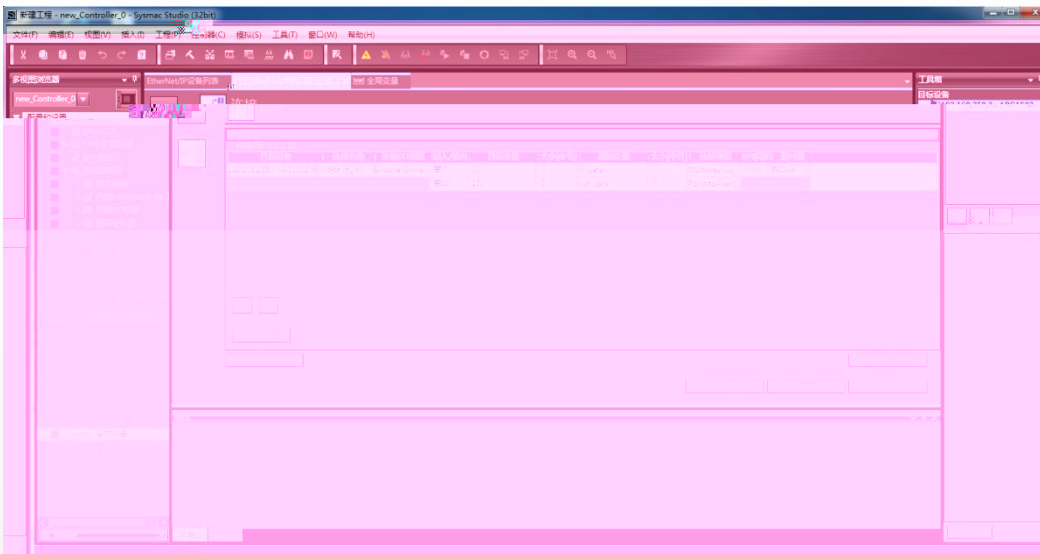
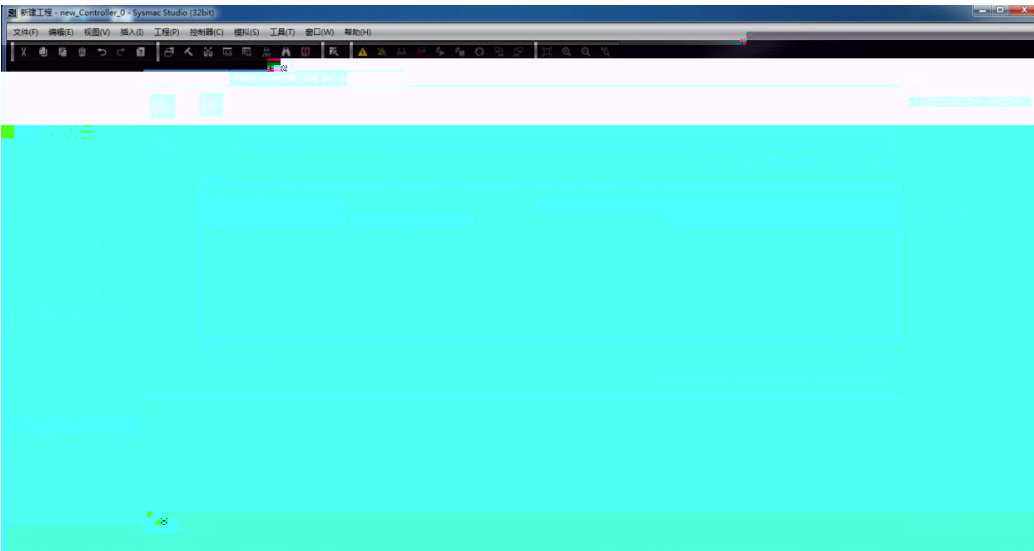
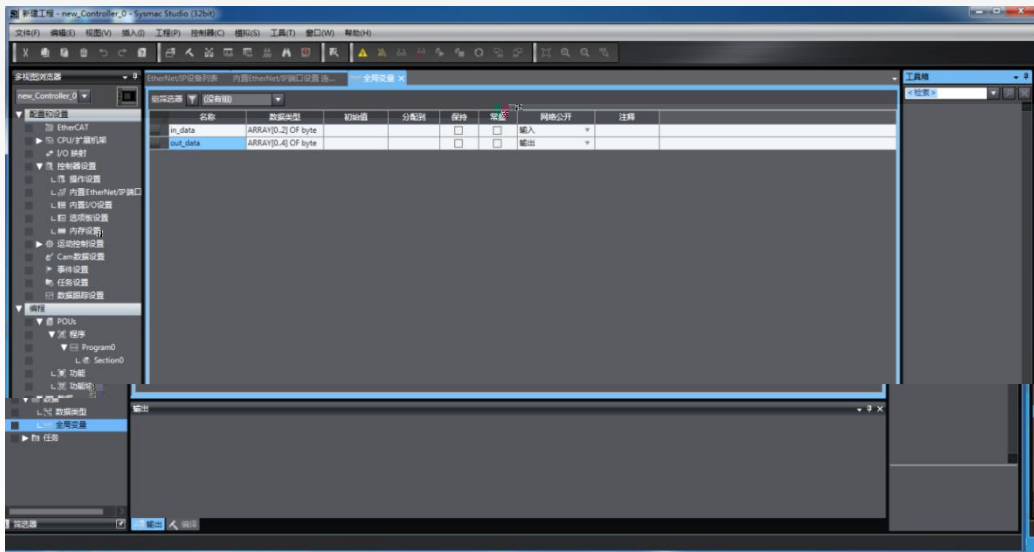
modbus

PLC



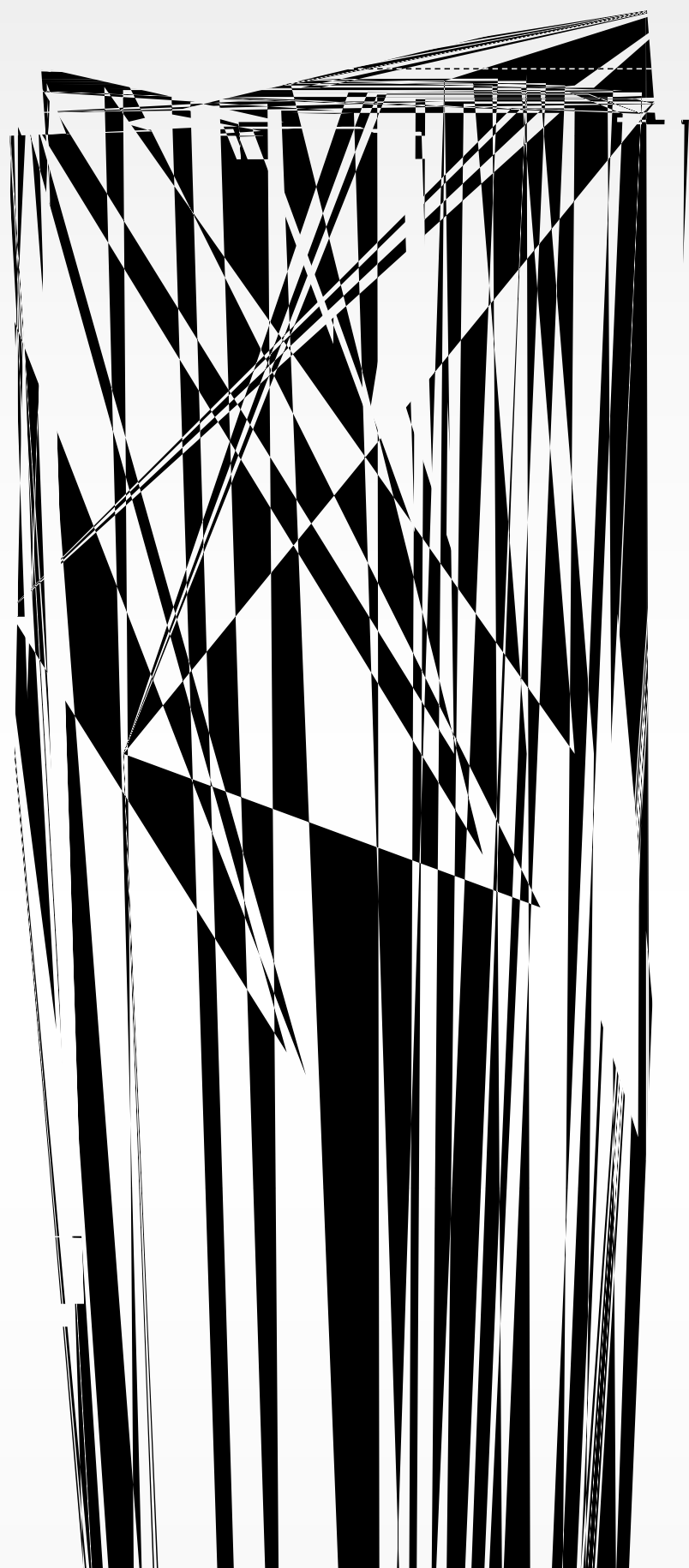






---

in_data(0)		
in_data(1)	1	
in_data(2)		
out_data(0)		
out_data(1)	1	
out_data(2)		
out_data(3)	2	
out_data(4)		



**THE BVA**