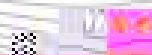
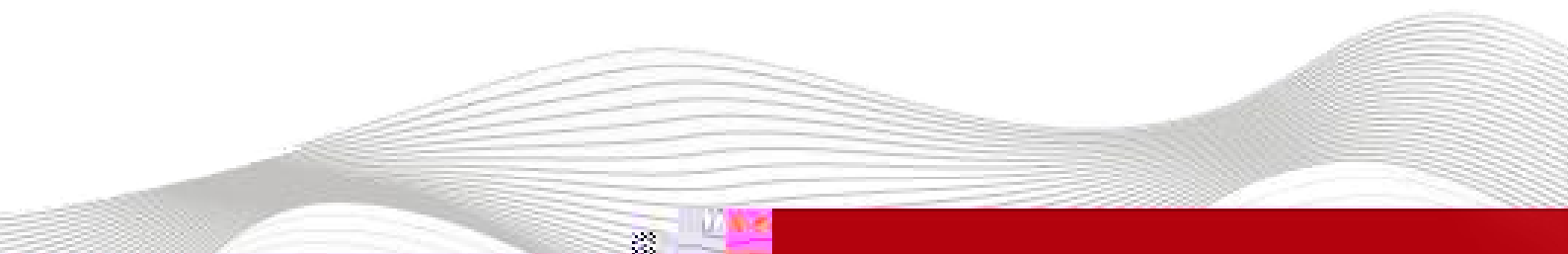
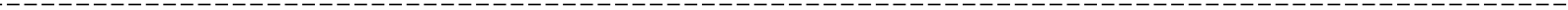
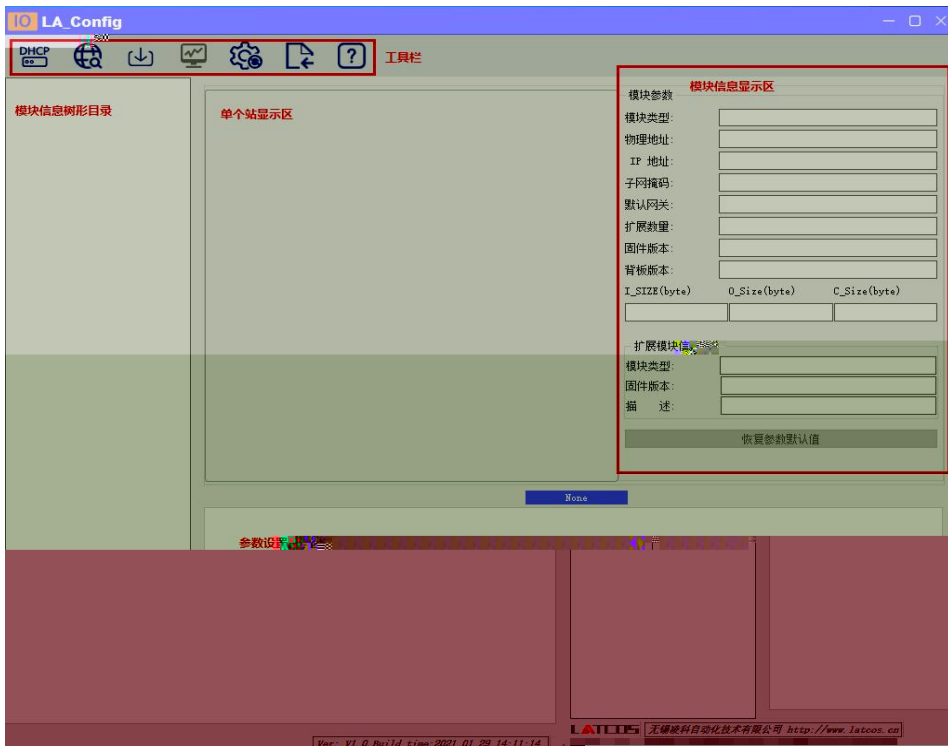

透科自动化







DHCP

	MAC	IP	状态
1	7C : BA : CC : 15 : 82 : 3E	192 . 168 . 0 . 1	未分配

添加MAC
删除MAC

启动服务
关闭服务

加载配置
保存配置

DHCP 启动单启模块中源被分配新的IP地址

信息栏



DHCP

	MAC	IP	状态
1	7C : BA : CC : 15 : 82 : 3E	192 . 168 . 0 . 3	分配成功

添加MAC
删除MAC

启动服务
关闭服务

加载配置
保存配置

DHCP 启动单启模块中源被分配新的IP地址

信息栏

```

[23-Mar-23 10:50:19] Warning: interface 192.168.10.19 is not Static. ignored
[23-Mar-23 10:50:19] Lease URL: http://127.0.0.1:6789
[23-Mar-23 10:50:19] Listening On: 192.168.0.211
[23-Mar-23 10:50:20] DHCPREQUEST for 7c:ba:cc:15:82:3e () from interface
[23-Mar-23 10:50:20] Network changed - re detecting static interfaces
  
```



Window with a blue title bar and a close button (X) in the top right corner. The window contains a table with the following columns:

mac	IP地址	子网掩码	默认网关	模块名称	状态
-----	------	------	------	------	----

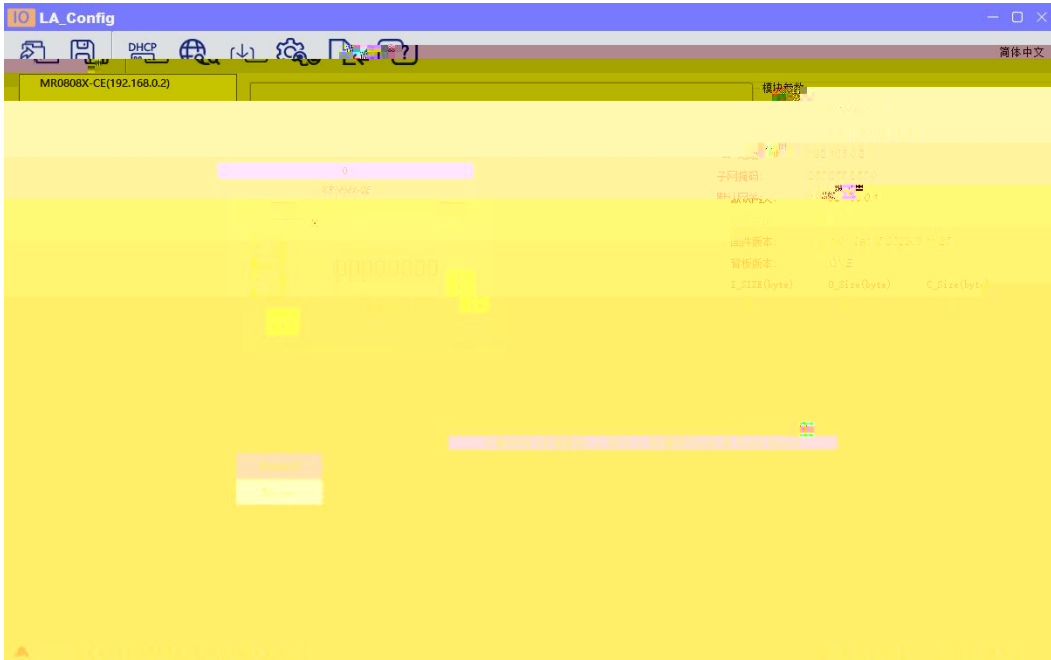
Below the table, there is a control panel with the following elements:

- 扫描时间: 5 :S
- 全局扫描
- 修改IP
- 恢复出厂设置
- 重启模块

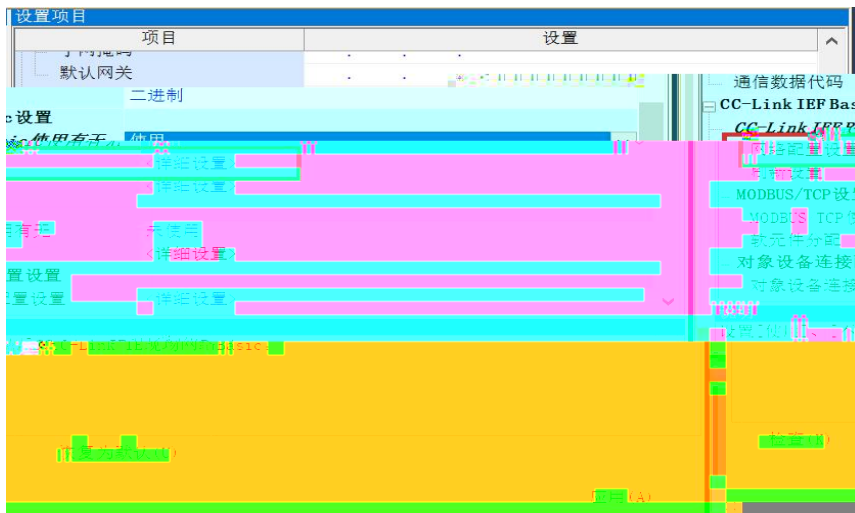
Window with a blue title bar and a close button (X) in the top right corner. The window content is mostly obscured by a large green rectangular area. The table header from the previous image is visible at the top of the green area:

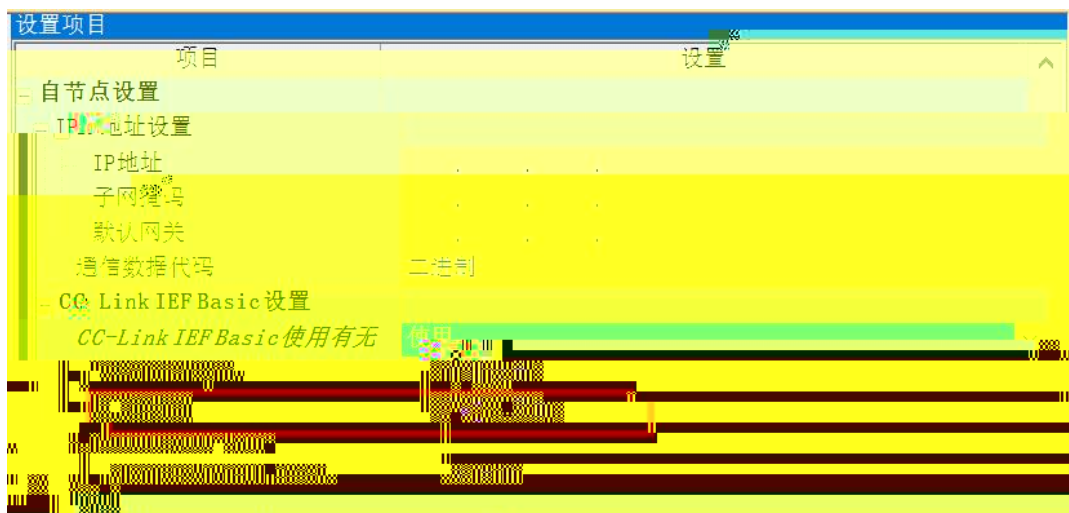
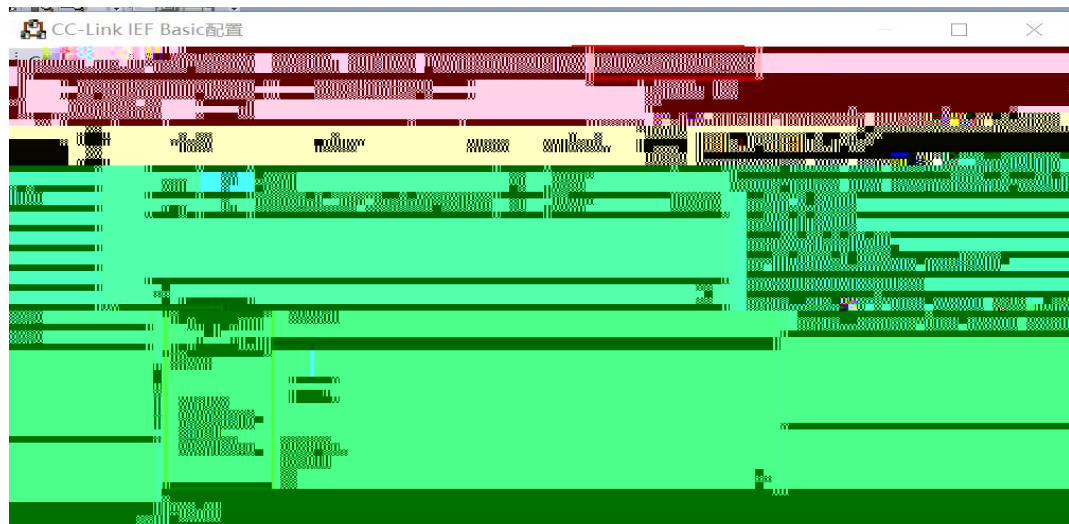
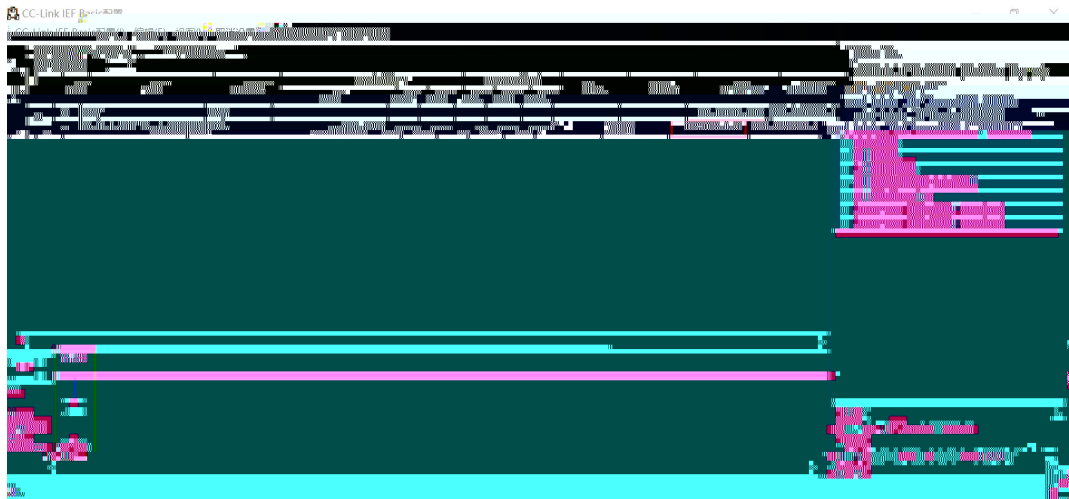
mac	IP地址	子网掩码	默认网关	模块名称	状态
-----	------	------	------	------	----

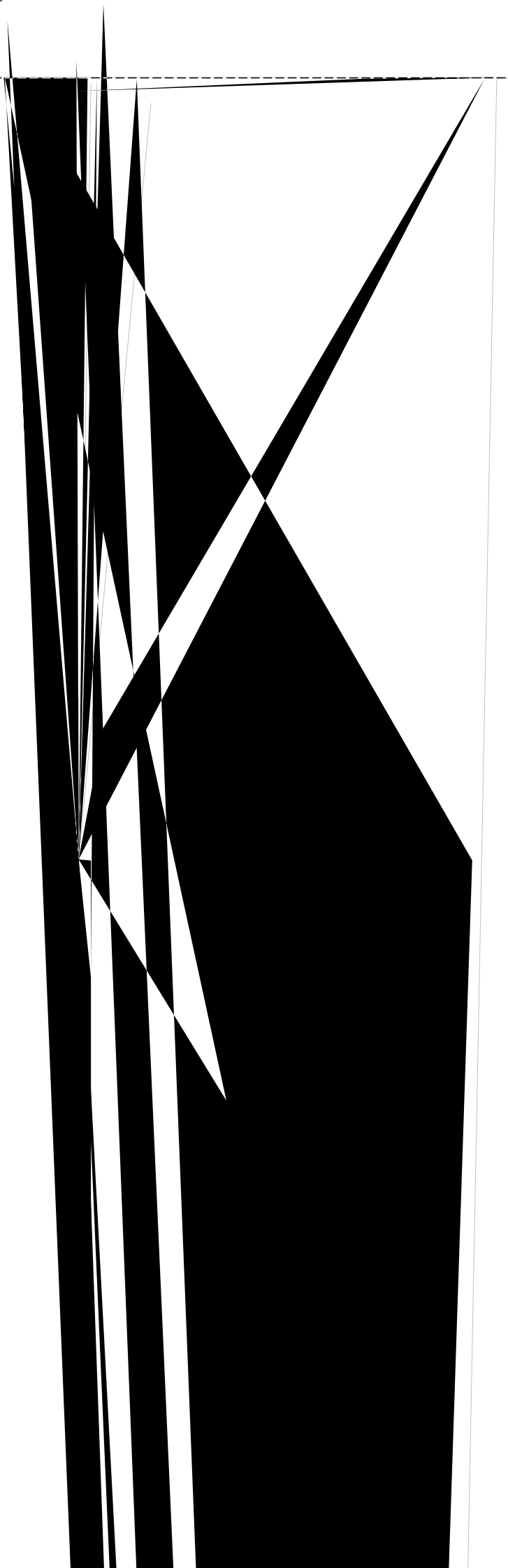
At the bottom left of the window, there is a small status bar with the text: 当前时间: 2023-10-27 14:14:14













技科自強
LATICOS

04-26160500 / www.laticos.com.tw

