

2023-03-23

2023 03 23

2023 03 23

R PLC CCLINK_IE_Field Basic MR-CE IO

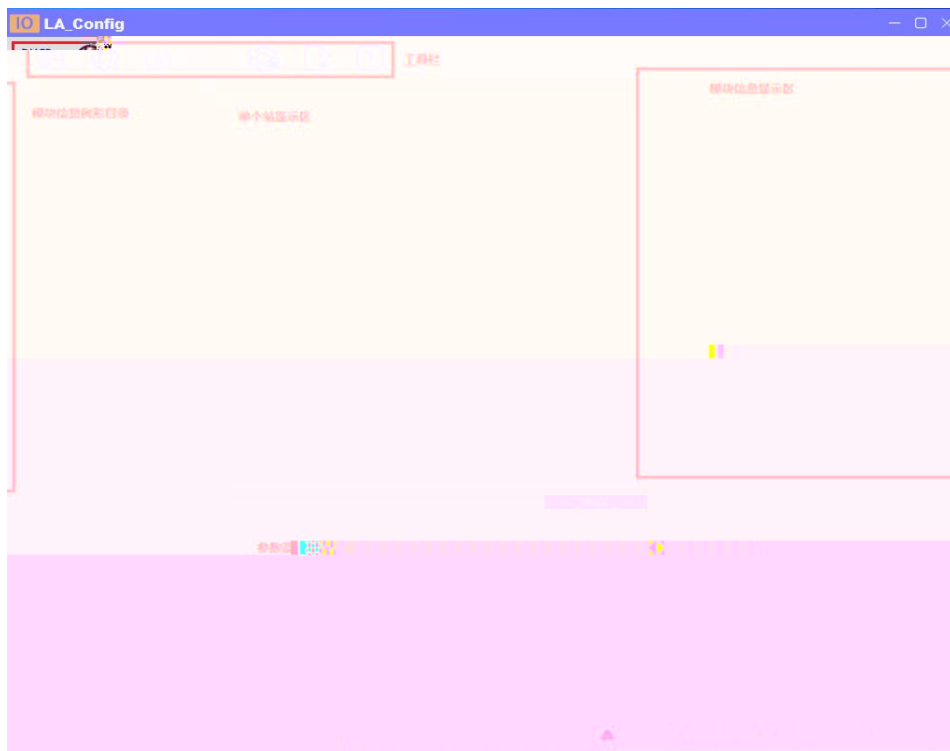
R PLC CCLINK_IE_Field Basic MR-CE IO GX-WORKS3
IO

- GX-WORKS3


1. R PLC IO

2. PLC Ethernet CCLINK_IE_Field Basic IO

LAEConfig IP IP 192.168.0.x



						
DHCP 服务	扫描 模块	下载 参数	监控	参数	描述文 件导入	帮助


✕

IP地址范围: —



IP

IP


LA_Config
— □ ✕

MR0808X-CE(192.168.0.2)

模块管理

0

MR0808X-CE



— 地址: 192.168.0.2

子网掩码: 255.255.255.0

默认网关: 192.168.0.1

“IP”

“IP”



DHCPService

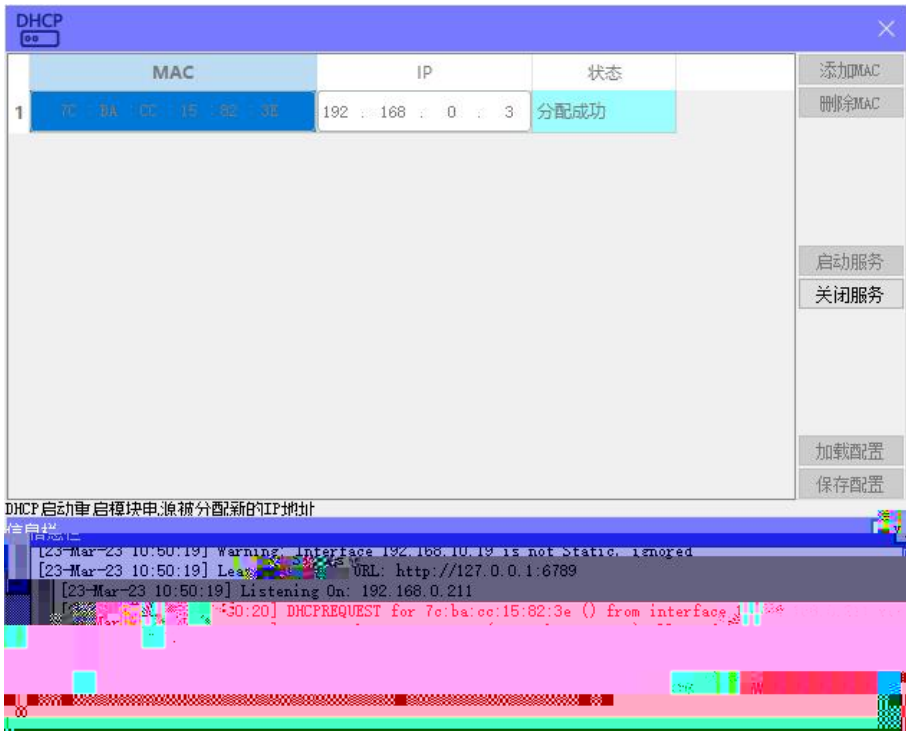
“ MAC” “ MAC”

MAC

IP

“ ”

IP



“ ”

2



mac	IP地址	子网掩码	默认网关	模块名称	状态
-----	------	------	------	------	----

扫描时间 5 :S 全局扫描 修改IP 恢复出厂设置 重启模块

mac	IP地址	子网掩码	默认网关	模块名称	状态
-----	------	------	------	------	----

IP

" IP"

IP

GX Words 3

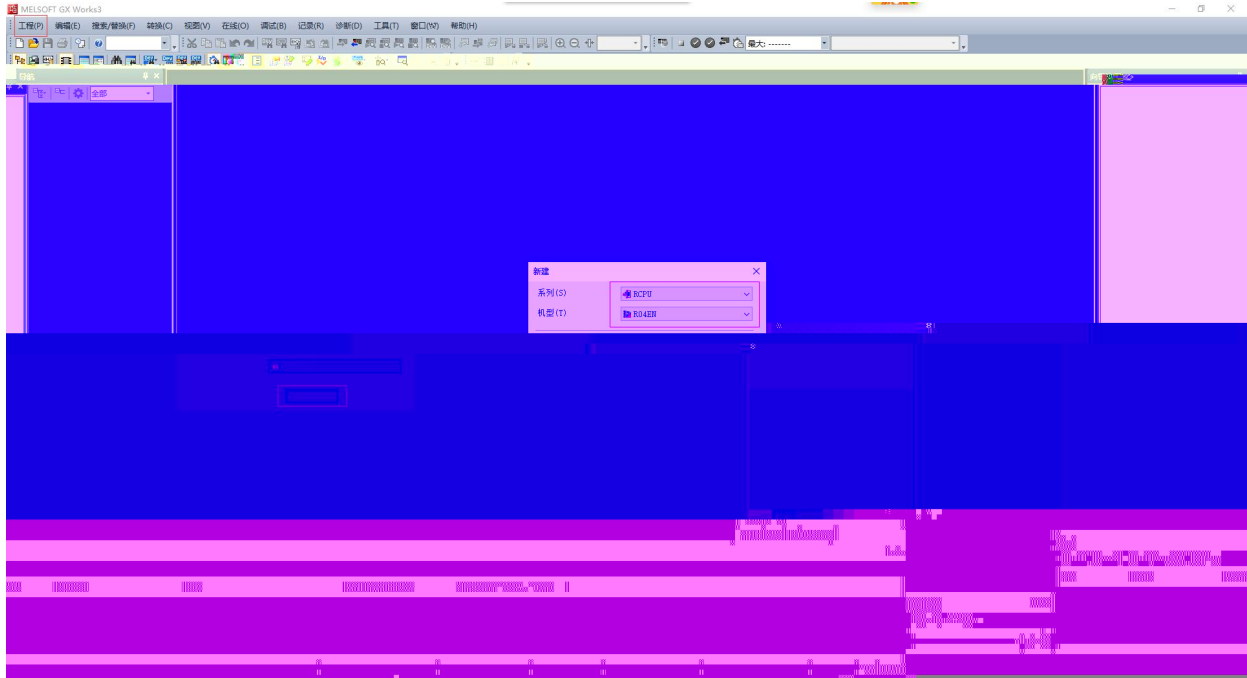
" " " " "

PLC

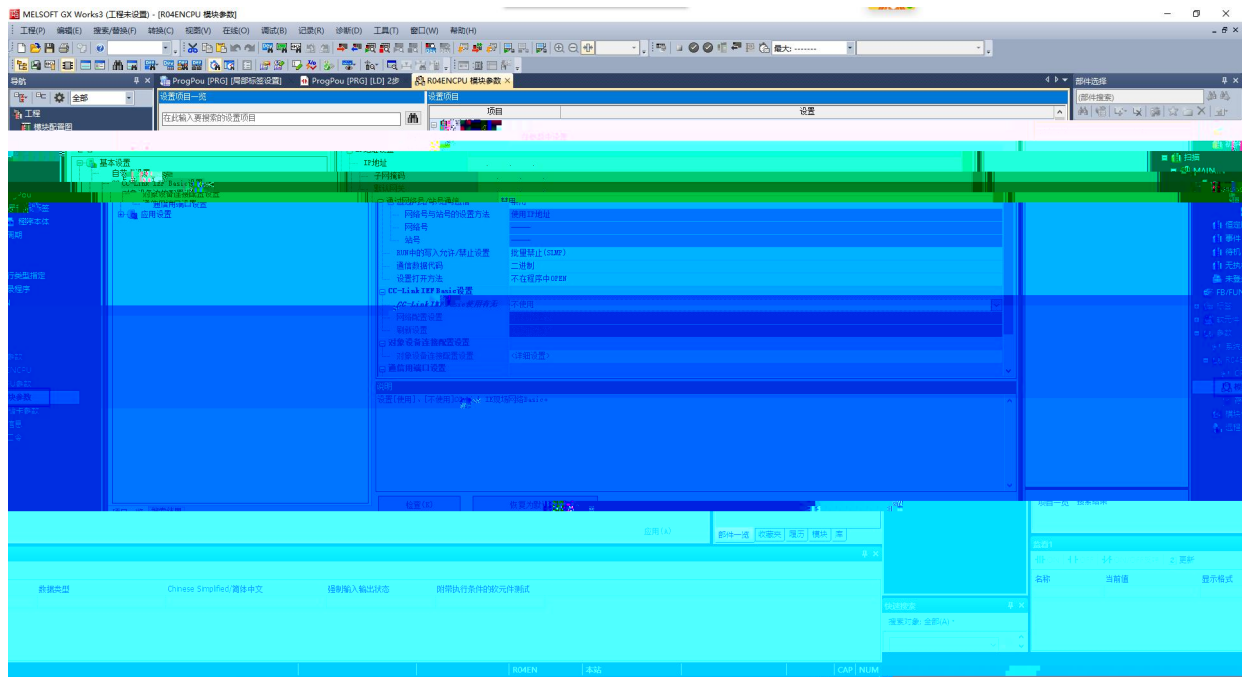
CPU

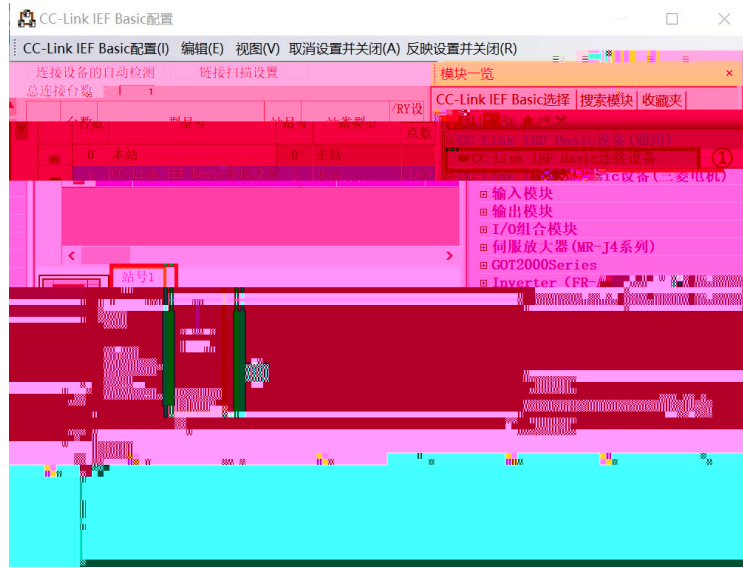
5U

CPU

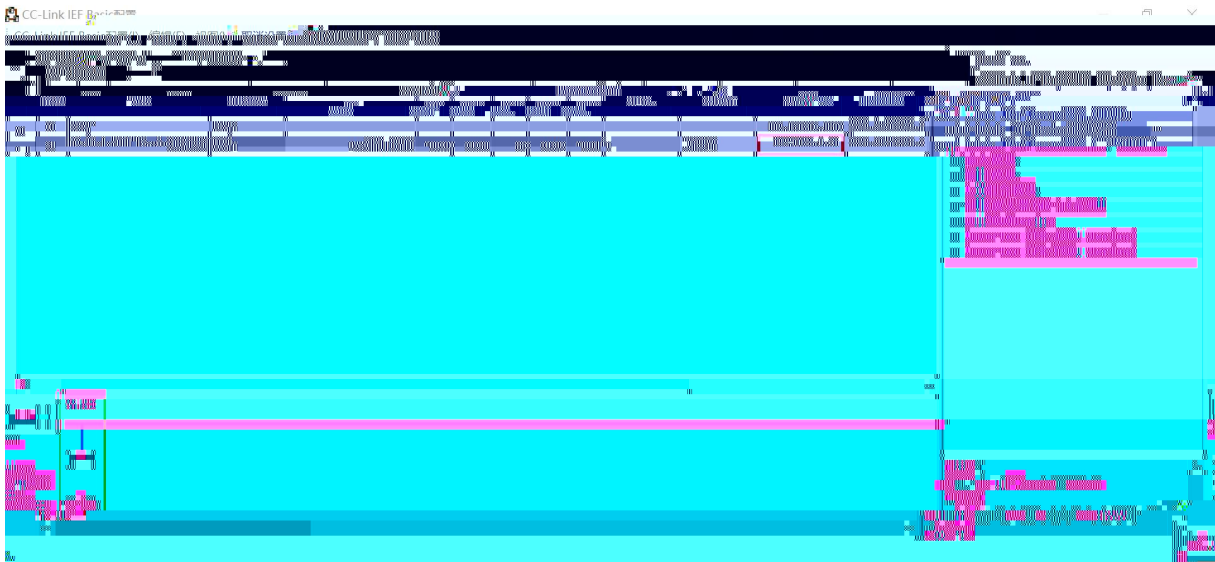


/FX5UCPU/ /



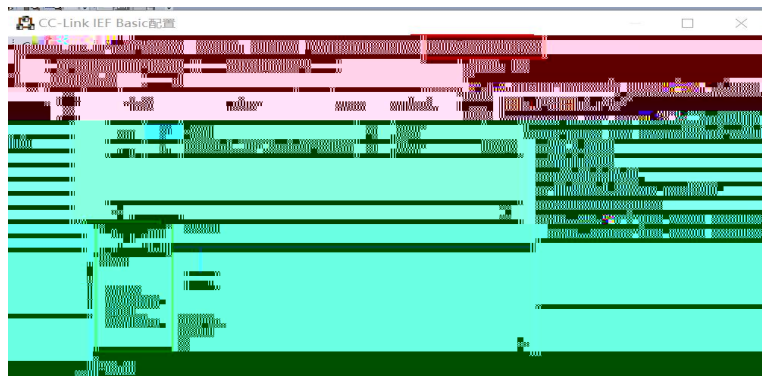


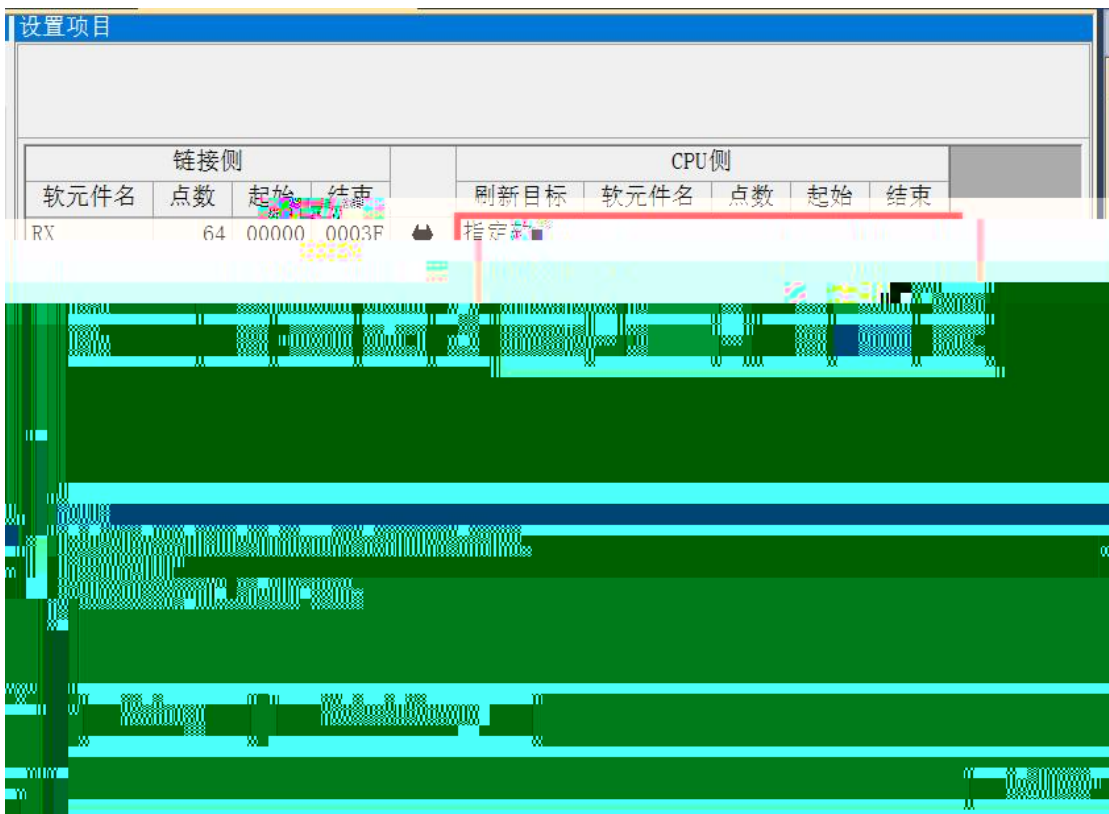
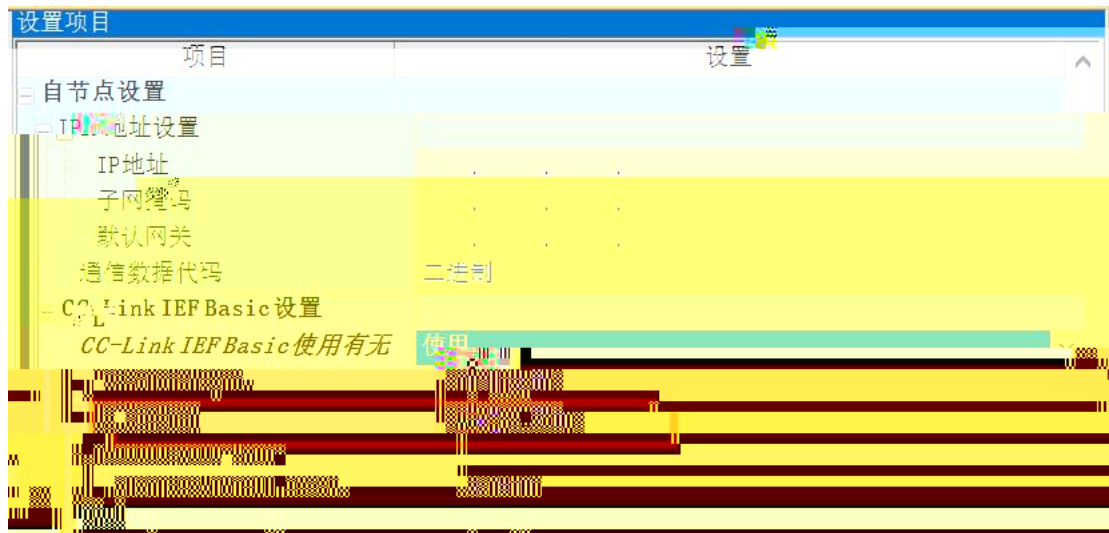
CC-Link IE Field Basic IP



“

”





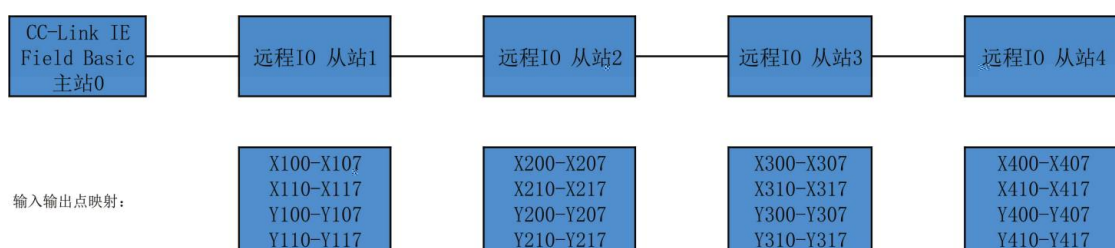
CC-Link IE Field Basic

64

64DI 64DO

X100,Y100

IO



注：120=170为空

