



Ethernet/IP R51CX-EP FANUC



2022-11-09

2022 11 9

2022 11 9

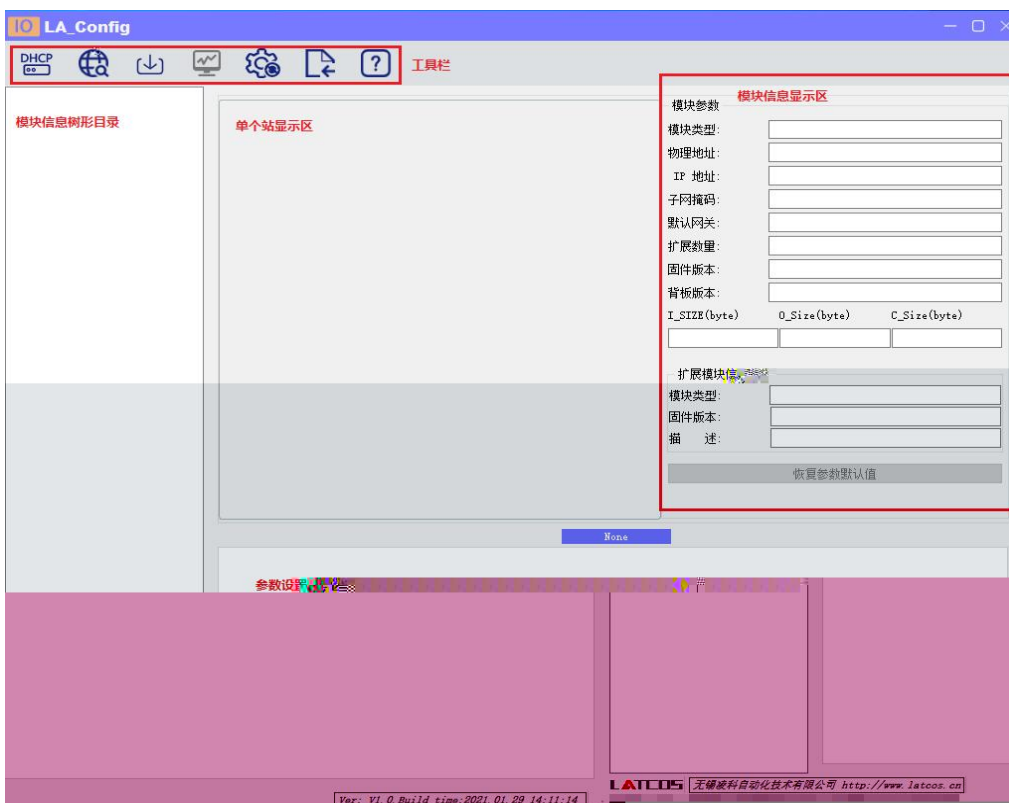
FANUC Ethernet/IP IO

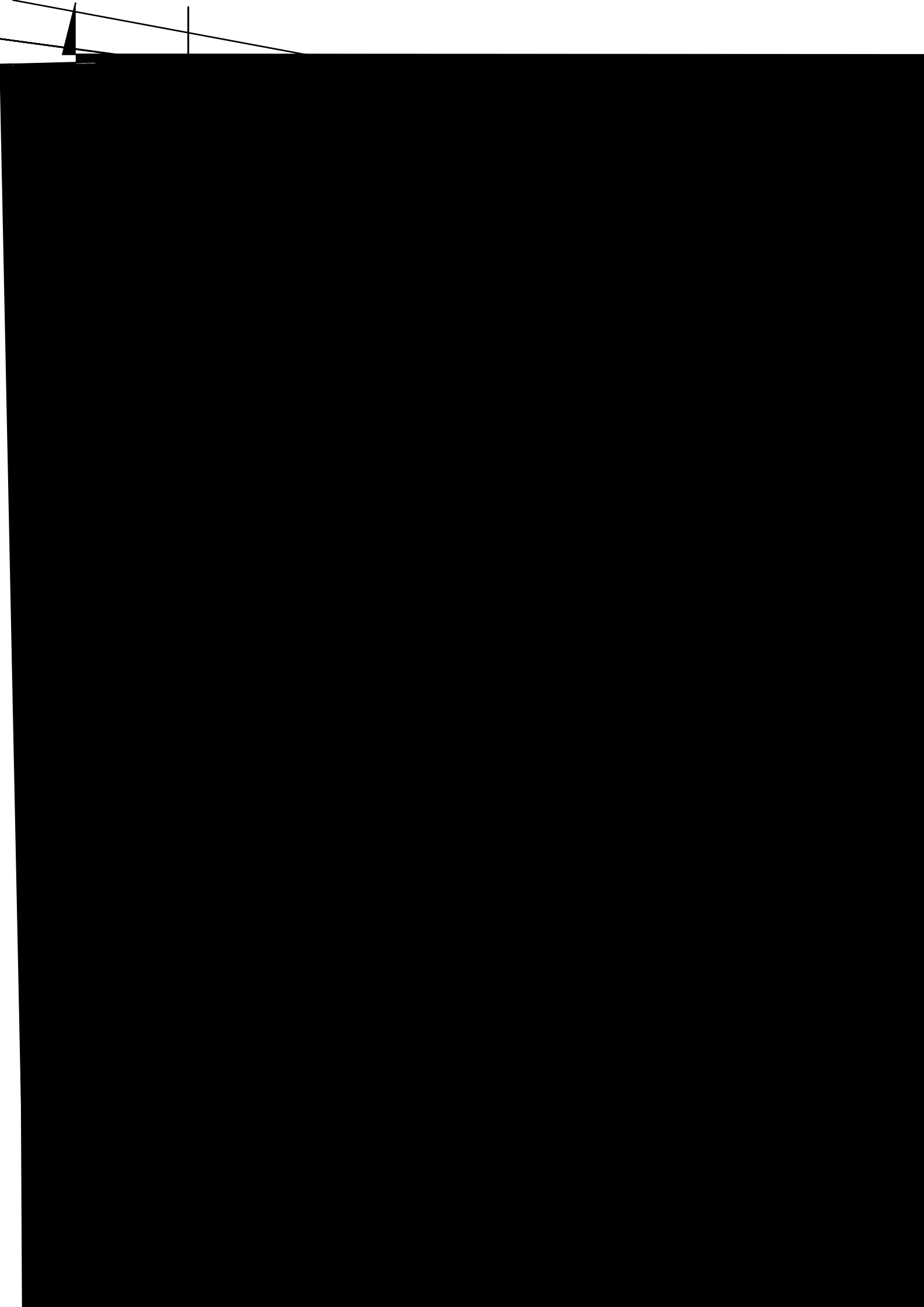
FANUC Ethernet/IP IO EtherNET/IP
IO

- FANUC
- IO SRX_EP20220513.eds

1.FANUC IO
2. FANUC Ethernet IO

LAEConfig IP IP 192.168.0.x







DHCPService

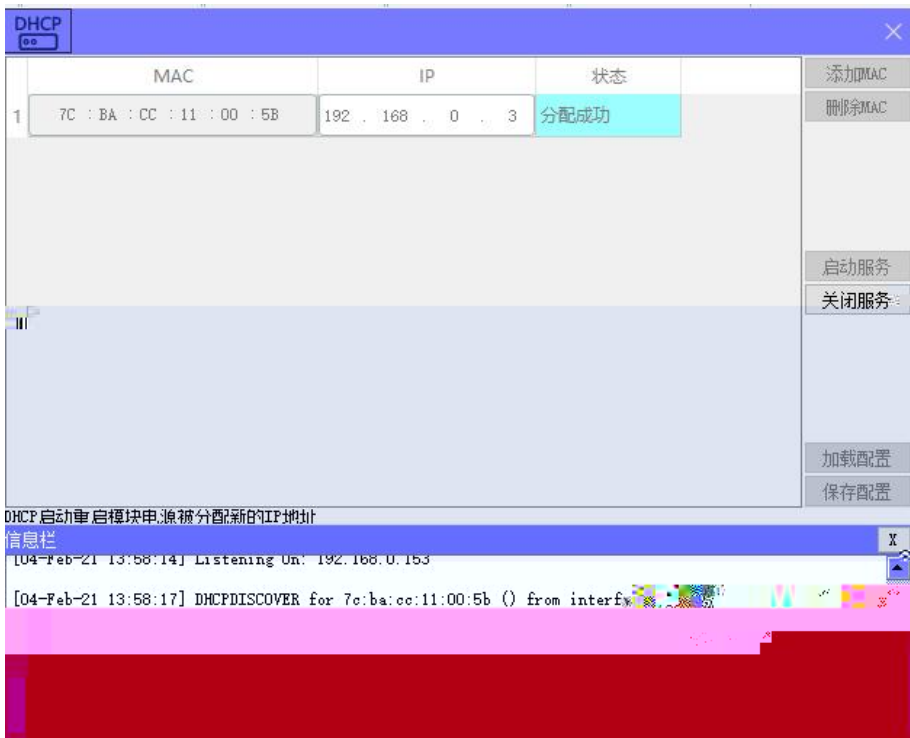
" MAC" " MAC"

MAC

IP

" "

IP



" "



mac IP地址 子网掩码 默认网关 模块名称 状态

mac	IP地址	子网掩码	默认网关	模块名称	状态
-----	------	------	------	------	----

扫描时间 5 :S 全局扫描 修改IP 恢复出厂设置 重启模块

mac IP地址 子网掩码 默认网关 模块名称 状态

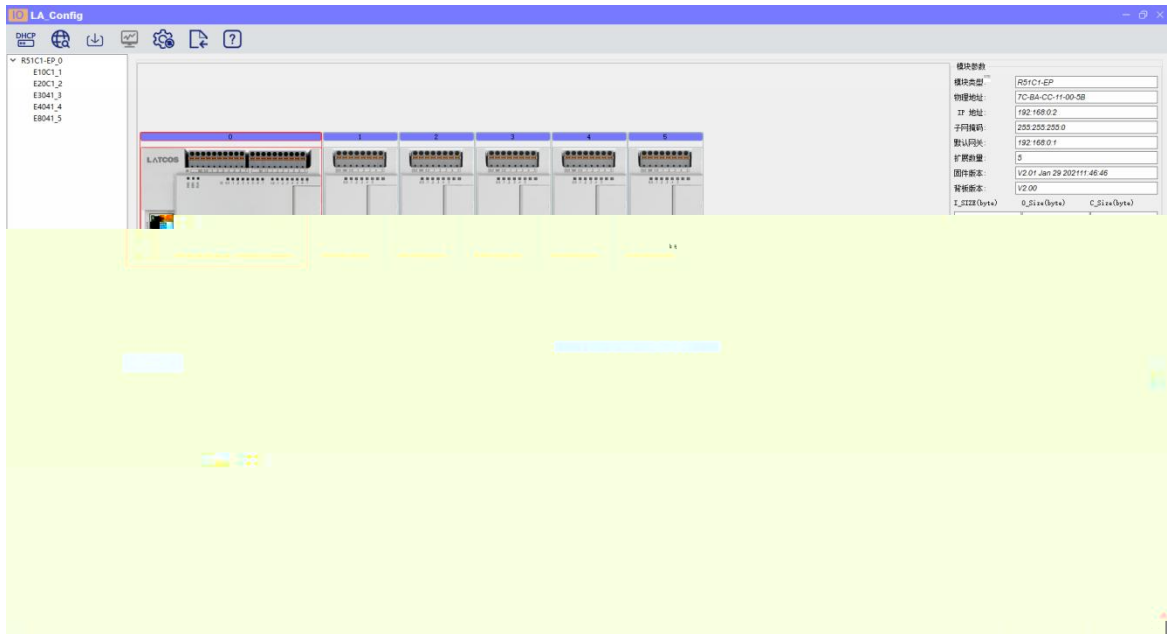
mac	IP地址	子网掩码	默认网关	模块名称	状态
-----	------	------	------	------	----

扫描时间 5 :S 全局扫描 修改IP 恢复出厂设置 重启模块

IP

" IP"

IP



/

1

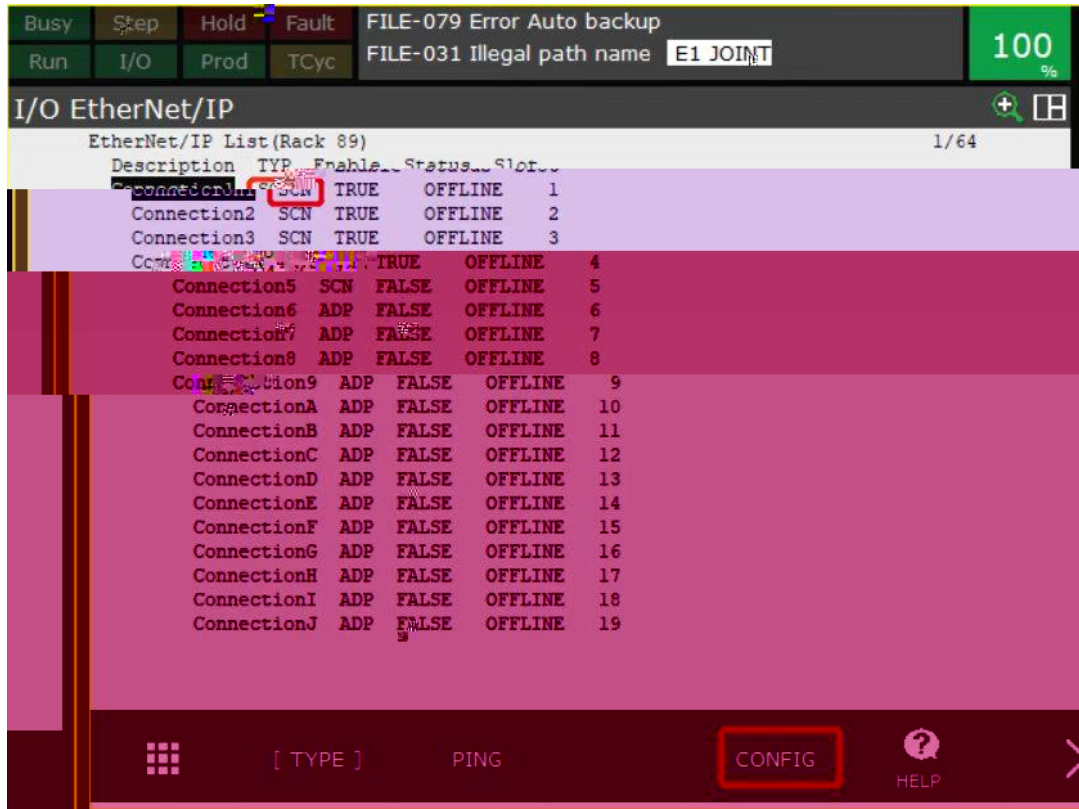
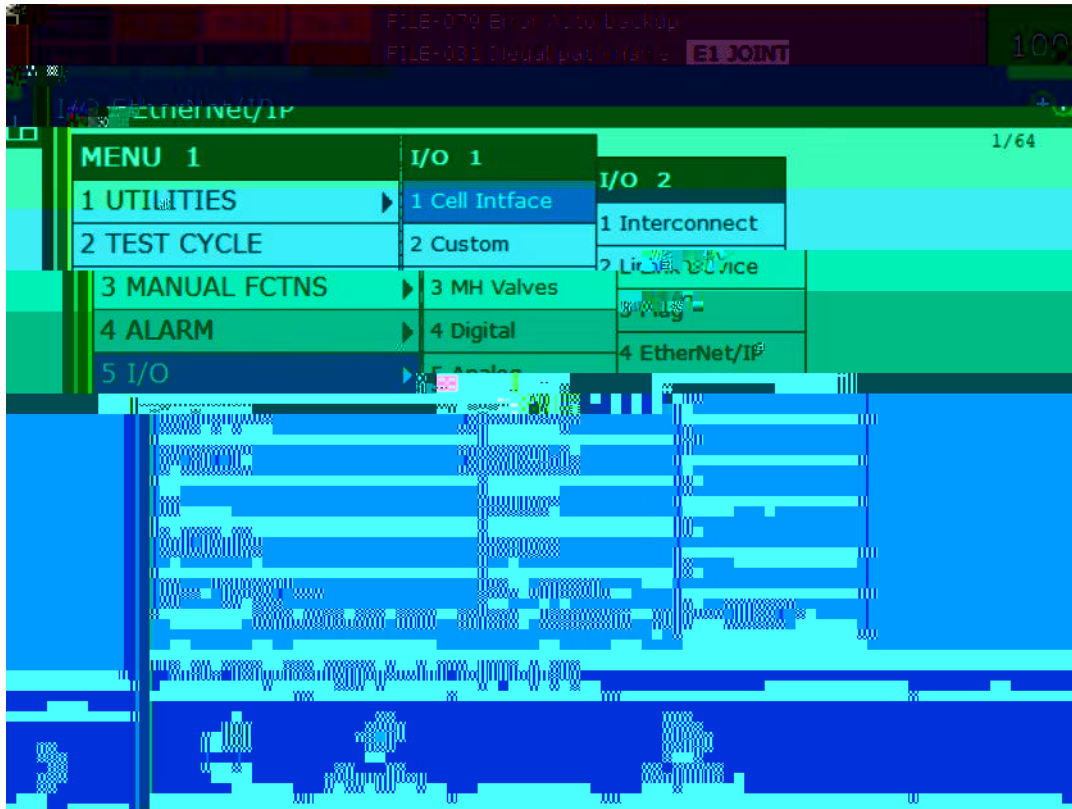
2) DO_ 0.7 DQ0.x bit
 DQ0.x Bit0 DQ-0.0 "Error Mode"

bit "1" "Error Value[7..0]" bit DQ0.x

3) DO_ 0.7 "Error Mode[7..0]" bit
 DQ

4)





Busy Step Hold Fault FILE-079 Error Auto backup
Run I/O Prod TCyc FILE-031 Illegal path name E1 JOINT 100%

I/O EtherNet/IP

Scanner config(Read-only) : 1/1

Description : Connection1
Name/IP address : 192.168.0.51
Vendor Id : 2546
Device Type : 7
Product code : 65021
Input size (bytes): 4
Output size (bytes): 1
RPI (ms) : 32
Assembly instance(input) : 100
Assembly instance(output) : 160
Configuration instance : 151

[TYPE] ADV PREV ANALOG HELP




Busy Step Hold Fault
Run I/O Prod TCyc PNS0001 LINE 0 T2 ABORTED E1 JOINT 100%

I/O EtherNet/IP

Scanner configuration :

HELP

Description		
Name/IP address	IP	IP
Vendor Id	ID	2546
Device Type		7
Product code		65021 SRX 65001 RX 65011 MR 65000 LUC
Input size bytes		
Output size bytes		
RPI(ms)	RPI	
Assembly instance input		
Assembly instance output		
Configuration instance		

Input size bytes	LAEconfig I_SIZE(byte) 	LAEconfig I_SIZE(byte) 
Output size bytes	LAEconfig O_SIZE(byte) 	1
Assembly instance input	100	100
Assembly instance output	150	160 1
Configuration instance	151	151

